

ALEXANDER

2019 TRADE SHOW CATALOG



USEFUL TOOLS FOR EVERYDAY

TABLE OF CONTENTS

01 SCREWDRIVERS	
14 HAND TOOLS	
20 LIGHTS	
27 MAGNETIC BOWLS	
28 AUTO ACCESSORIES	
30 CUTTING TOOLS	
34 DRINK ACCESSORIES	
38 WRITING TOOLS	
41 DESK ACCESSORIES	
44 PERSONAL CARE	
54 ORDER INFORMATION	
56 IMPRINT METHODS	
57 NEW PRODUCTS	

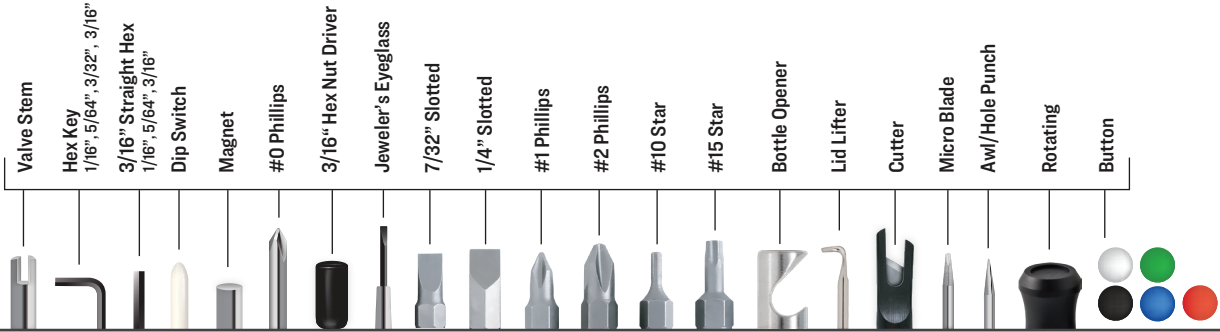
NOTE ON PRICING

This catalog does not have pricing due to the uncertainty of tariffs. Please check our website, www.alexandermc.com for the latest pricing. Look forward to a catalog with full pricing in early spring.

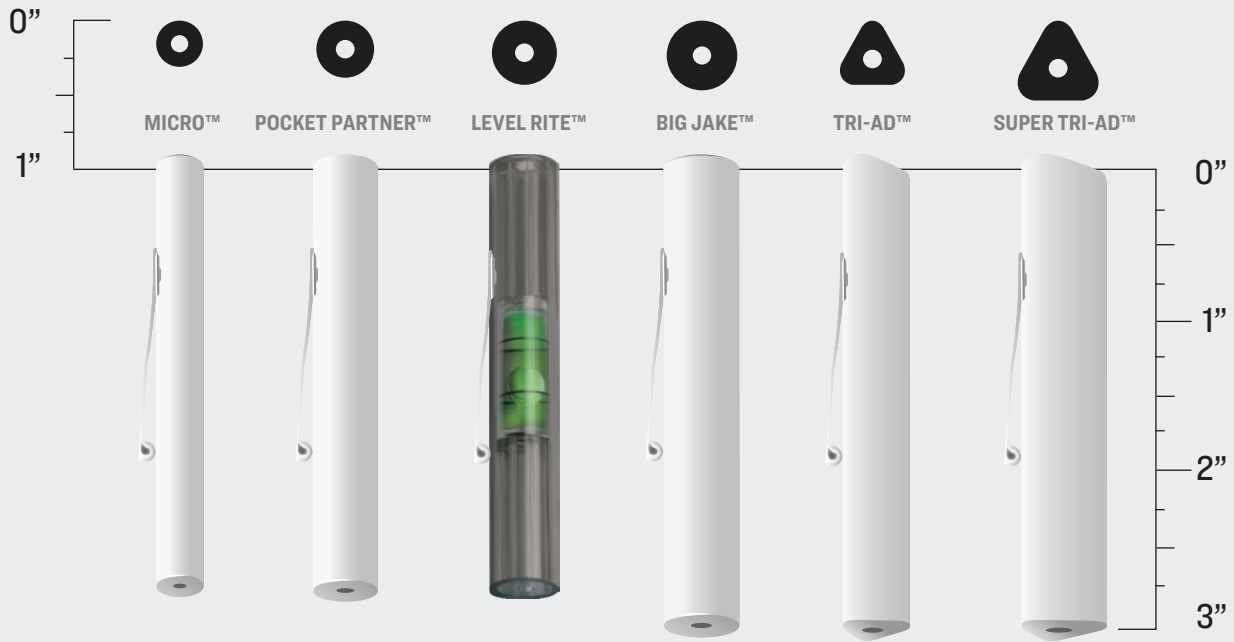
Thank you for your understanding.

SCREWDRIVERS

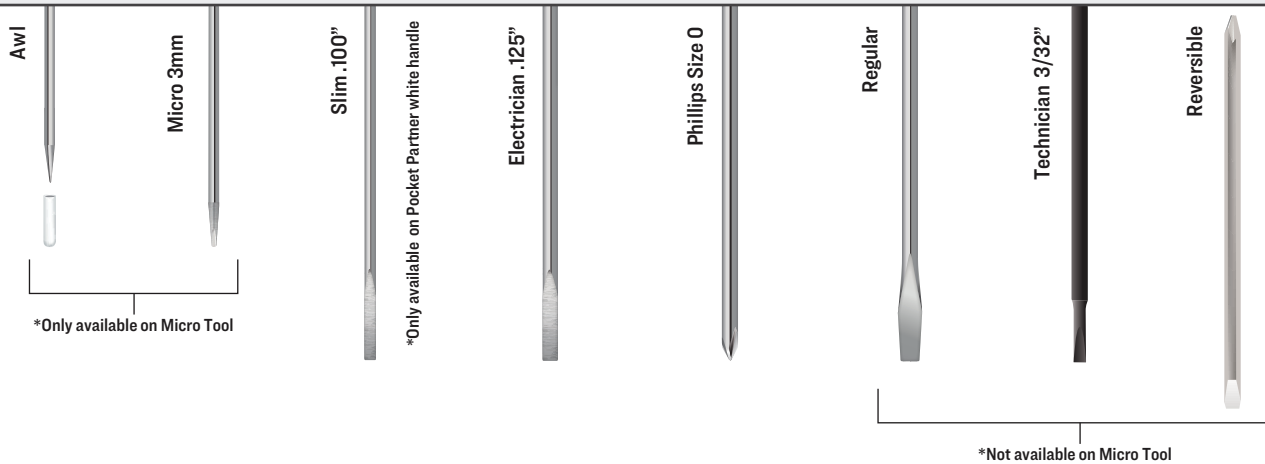
TOP OPTIONS



HANDLE OPTIONS



BLADE OPTIONS



ITEM 2035 POCKET PARTNER™ FIXED BLADE SCREWDRIVER

THE SHOW OFF

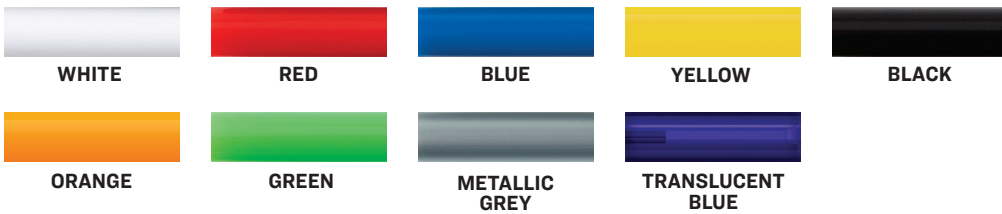
- 18 tool top and 5 blade options for specialized applications.
- Handy pocket clip.
- Regular blade and button top are standard, optional blades and tops available at additional cost.

SIZE: 5.50"L x 0.40"W w/Button Top
IMPRINT SIZE: 2.00"L x 0.94"H/Barrel
OPTIONAL IMPRINT SIZE: 0.50"L x 0.375"H/Above Clip
IMPRINT METHOD: Screen Print / Full Color Decal
PACKAGING: Bulk
WEIGHT: 2.5 lbs per 100 Units

200 500 1500 2500 (4A)
Check website for pricing.



HANDLE COLORS



BUTTON TOP COLORS

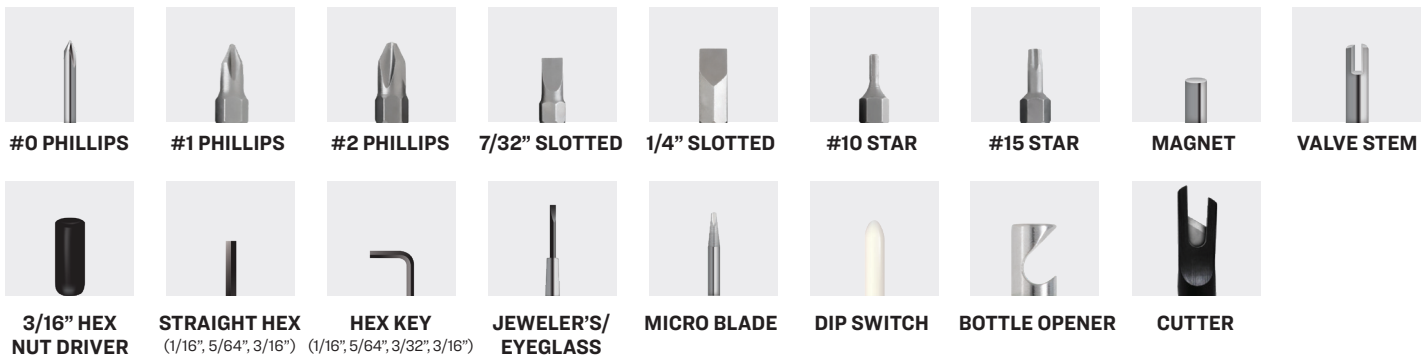


BLADES



*Available on white handle only

TOPS





LOGO ABOVE THE CLIP

IMPRINT SIZE:
0.50" L X 0.375" H

ITEM 2032 POCKET PARTNER™ REVERSIBLE BLADE SCREWDRIVER

SIZE: 5.25"L x 0.40"W w/Button Top
IMPRINT SIZE: 2.00"L x 0.94"H/Barrel
OPTIONAL IMPRINT SIZE: 0.50"L x 0.375"H/Above Clip
IMPRINT METHOD: Screen Print/Full Color Decal
PACKAGING: Bulk
WEIGHT: 2.5 lbs per 100 Units

200 500 1500 2500(4A)
Check website for pricing.

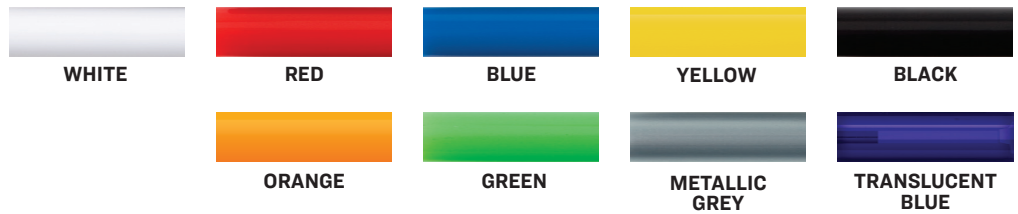
- Easy-to-change reversible blade with slotted and Phillips heads.
- 18 tool top options for specialized applications.
- Handy pocket clip.
- Reversible blade and button top are standard, optional tops available at additional cost.



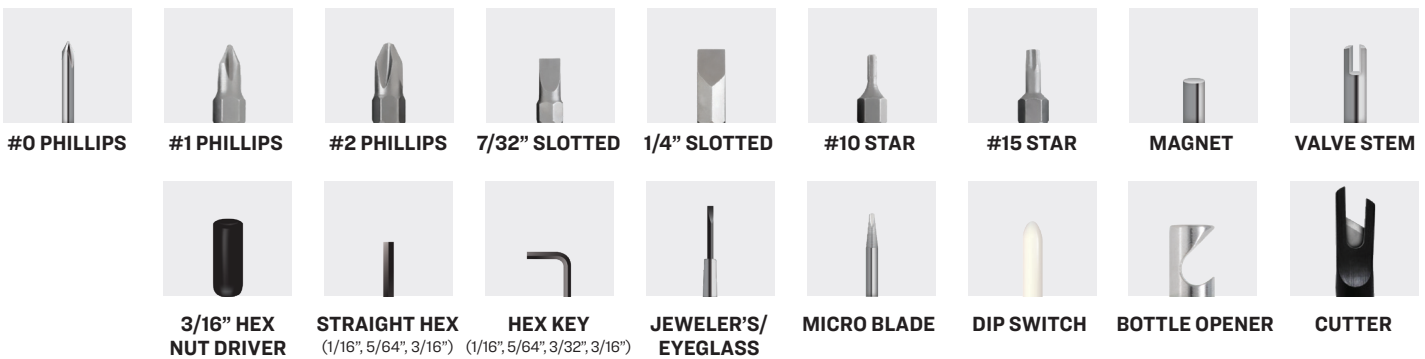
BUTTON TOP COLORS



HANDLE COLORS



TOPS



ITEM 2048 LEVEL RITE™ FIXED BLADE SCREWDRIVER

THE SHOW OFF

- Unique level handle.
- 18 tool top and 4 blade options for specialized applications.
- Handy pocket clip.
- Regular blade and button top are standard, optional blades and tops available at additional cost.

SIZE: 5.50"L x 0.45"W w/Button Top
IMPRINT SIZE: 2.00"L x 0.94"H/Barrel
OPTIONAL IMPRINT SIZE: 0.50"L x 0.375"H/Above Clip
IMPRINT METHOD: Screen Print
PACKAGING: Bulk
WEIGHT: 2.5 lbs per 100 Units
 200 500 1500 2500 (4A)
Check website for pricing.



HANDLE COLORS



TRANSLUCENT
SMOKE

BUTTON TOP COLORS



BLACK RED GREEN BLUE WHITE

BLADES



REGULAR BLADE
.125" WIDE HEAD



PHILLIPS
SIZE 0 HEAD



ELECTRICIAN
.125" WIDE HEAD



TECHNICIAN
3/32" (2.4mm) WIDE HEAD

TOPS



#0 PHILLIPS



#1 PHILLIPS



#2 PHILLIPS



7/32" SLOTTED



1/4" SLOTTED



#10 STAR



#15 STAR



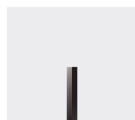
MAGNET



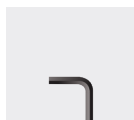
VALVE STEM



3/16" HEX
NUT DRIVER



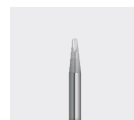
STRAIGHT HEX
(1/16", 5/64", 3/16")



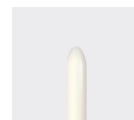
HEX KEY
(1/16", 5/64", 3/32", 3/16")



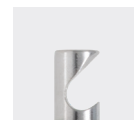
JEWELER'S/
EYEGLASS



MICRO BLADE



DIP SWITCH



BOTTLE OPENER



CUTTER



LOGO ABOVE THE CLIP

IMPRINT SIZE:
0.50" L X
0.375" H

ITEM 2049 LEVEL RITE™ REVERSIBLE SCREWDRIVER

SIZE: 5.25"L x 0.45"W w/Button Top
IMPRINT SIZE: 2.00"L x 0.94"H/Barrel
OPTIONAL IMPRINT SIZE: 0.50"L x 0.375"H/Above Clip
IMPRINT METHOD: Screen Print
PACKAGING: Bulk
WEIGHT: 2.5 lbs per 100 Units

200 500 1500 2500 (4A)
Check website for pricing.

- Unique level handle.
- Easy-to-change reversible blade with slotted and Phillips heads.
- 18 tool top options for specialized applications.
- Handy pocket clip.
- Reversible blade and button top are standard, optional tops available at additional cost.



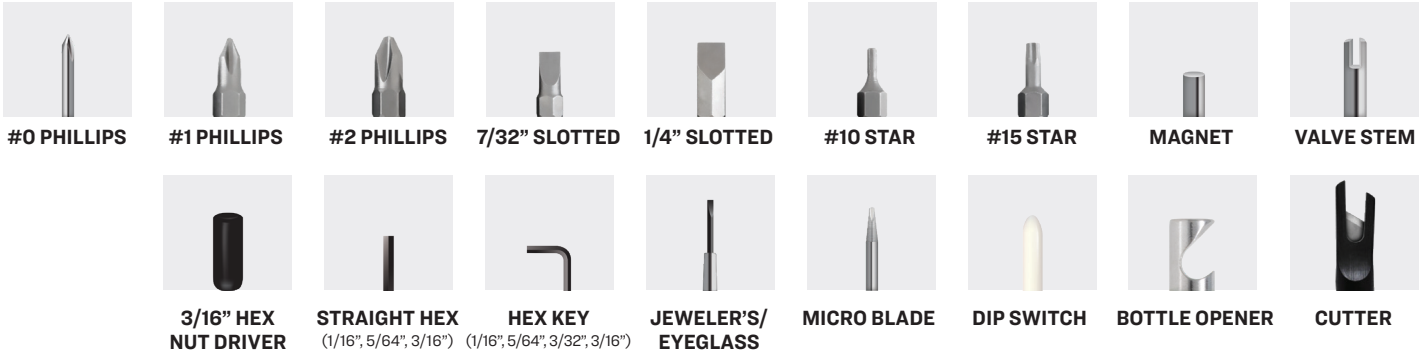
BUTTON TOP COLORS



HANDLE COLORS



TOPS



ITEM 2055 BIG JAKE™ FIXED BLADE SCREWDRIVER

THE SHOW OFF

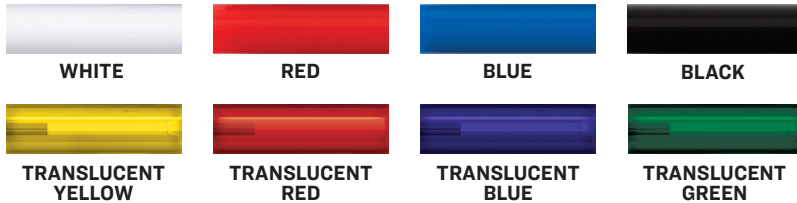
- 25% larger handle than Pocket Partner™.
- 20 tool top and 4 blade options for specialized applications.
- Handy pocket clip.
- Regular blade and button top are standard, optional blades and tops available at additional cost.

SIZE: 5.63"L x 0.50"W w/Button Top
IMPRINT SIZE: 2.00"L x 1.25"H/Barrel
OPTIONAL IMPRINT SIZE: 0.50"L x 0.375"H/Above Clip
IMPRINT METHOD: Screen Print/Full Color Decal
PACKAGING: Bulk
WEIGHT: 3.5 lbs per 100 Units

200 500 1500 2500 (4A)
Check website for pricing.



HANDLE COLORS



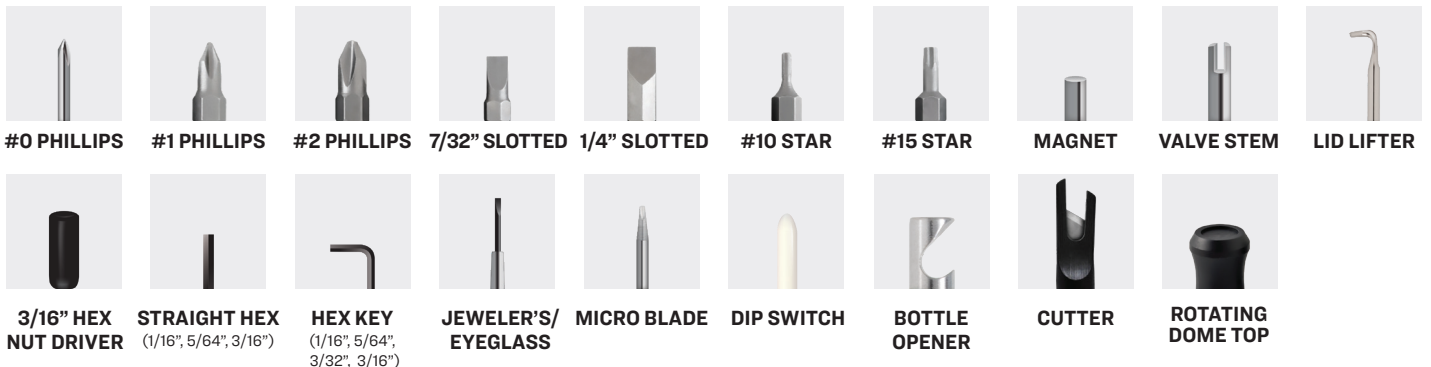
BUTTON TOP COLORS



BLADES



TOPS





LOGO ABOVE THE CLIP

IMPRINT SIZE:
0.50" L X
0.375" H

ITEM 2052 BIG JAKE™ REVERSIBLE SCREWDRIVER

SIZE: 5.38"L x 0.50"W w/Button Top

IMPRINT SIZE: 2.00"L x 1.25"H/Barrel

OPTIONAL IMPRINT SIZE: 0.50"L x 0.375"H/Above Clip

IMPRINT METHOD: Screen Print/Full Color Decal

PACKAGING: Bulk

WEIGHT: 3.5 lbs per 100 Units

200 500 1500 2500 (4A)

Check website for pricing.

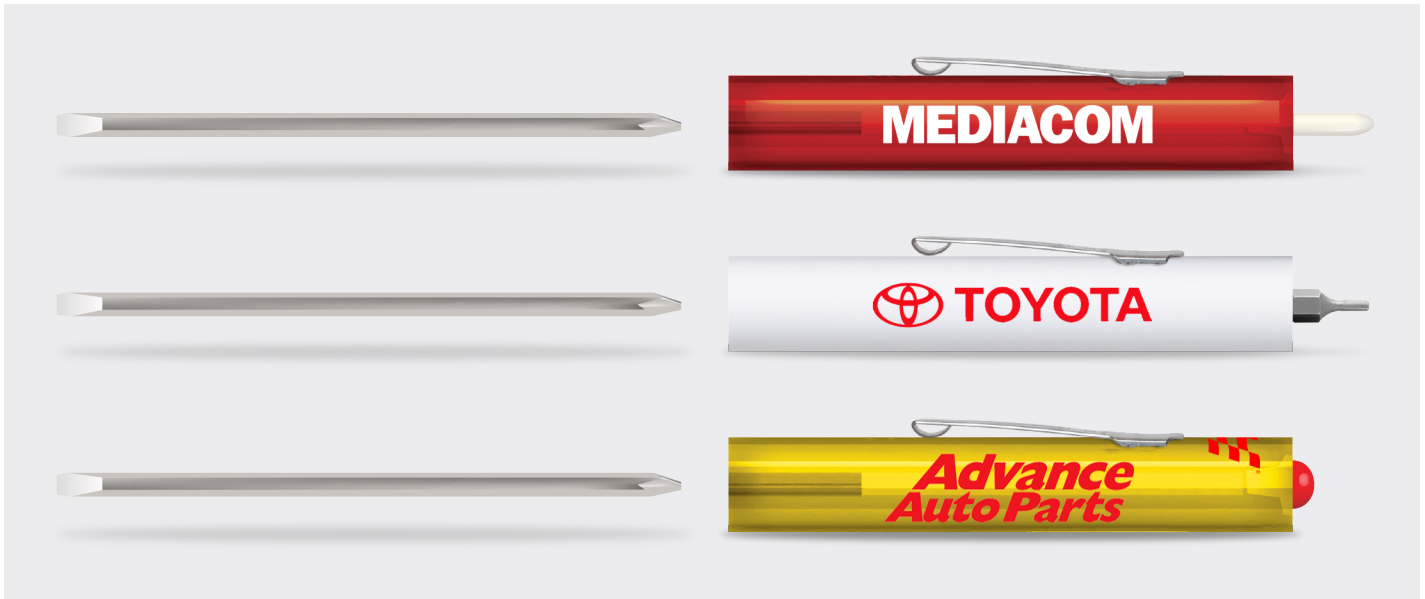
• 25% larger handle than Pocket Partner™.

• Easy-to-change reversible blade with slotted and Phillips heads.

• 20 tool top options for specialized applications.

• Handy pocket clip.

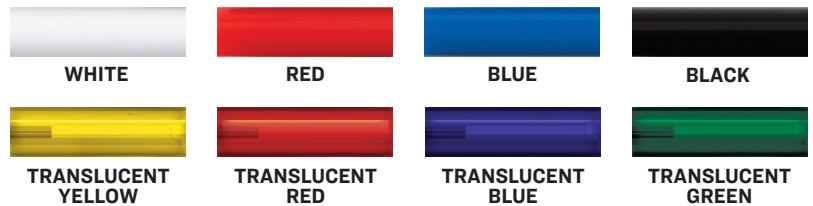
• Reversible blade and button top are standard, optional tops available at additional cost.



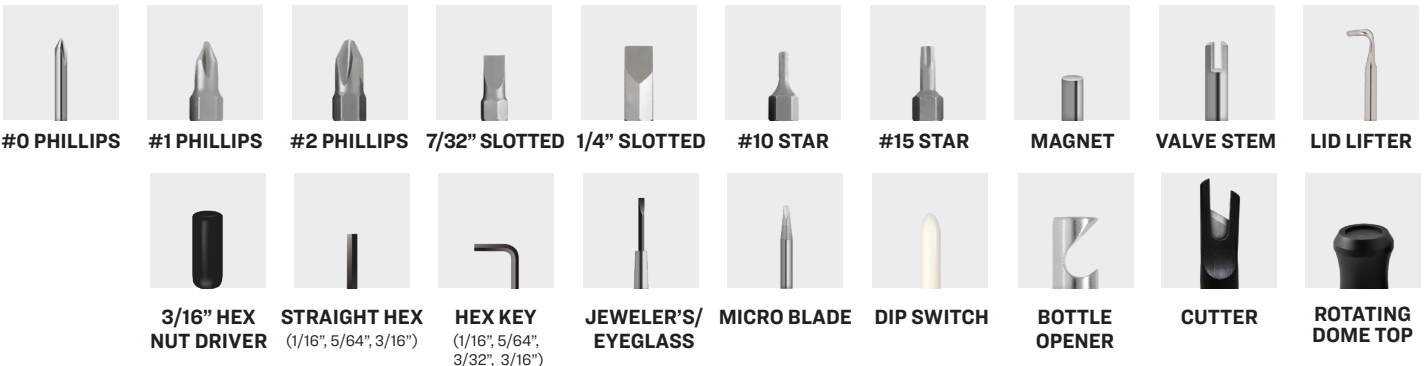
BUTTON TOP COLORS



HANDLE COLORS



TOPS



ITEM 2065 TRI-AD™ FIXED BLADE SCREWDRIVER

- Unique 3 sided handle, one set up charge includes imprint on 3 sides.
- 19 tool top and 4 blade options for specialized applications.
- Handy pocket clip.
- Regular blade and button top are standard, optional blades and tops available at additional cost.

SIZE: 5.63"L x 0.45"W w/Button Top
IMPRINT SIZE: 2.00"L x 0.25"H/Barrel
IMPRINT METHOD: Screen Print
PACKAGING: Bulk
WEIGHT: 3.5 lbs per 100 Units

200 500 1500 2500 (4A)
Check website for pricing.



HANDLE COLORS



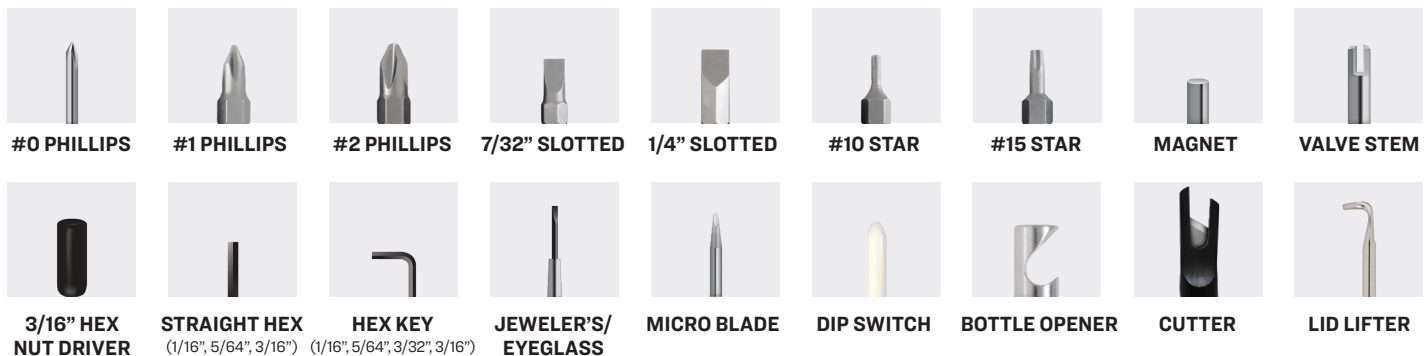
BUTTON TOP COLORS



BLADES



TOPS



ITEM 2062 TRI-AD™ REVERSIBLE SCREWDRIVER

SIZE: 5.38"L x 0.45"W w/Button Top
IMPRINT SIZE: 2.00"L x 0.25"H/Barrel
IMPRINT METHOD: Screen Print
PACKAGING: Bulk
WEIGHT: 3.5 lbs per 100 Units

200 500 1500 2500 (4A)
Check website for pricing.

- Unique 3 sided handle, one set up charge includes imprint on 3 sides.
- Easy-to-change reversible blade with slotted and Phillips heads.
- 19 tool top options for specialized applications.
 - Handy pocket clip.
- Reversible blade and button top are standard, optional tops available at additional cost.



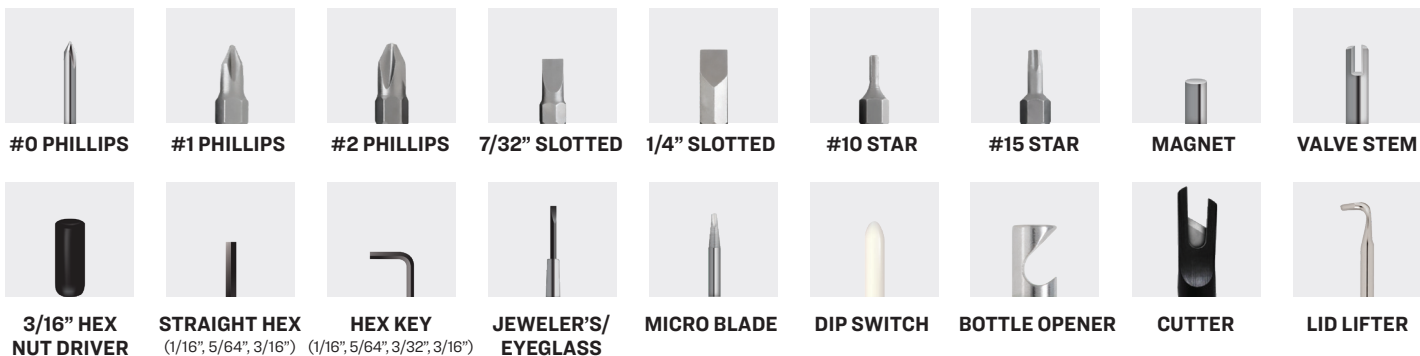
BUTTON TOP COLORS



HANDLE COLORS



TOPS



ITEM 2066 SUPER TRI-AD™ FIXED BLADE SCREWDRIVER

- Unique 3 sided handle, 25% larger than Tri-Ad™.
- One set up charge includes imprint on 3 sides.
- 19 tool top and 4 blade options for specialized applications.
- Handy pocket clip.
- Regular blade and button top are standard, optional blades and tops available at additional cost.

SIZE: 5.63"L x 0.56"W w/Button Top
IMPRINT SIZE: 2.00"L x 0.28"H/Barrel
IMPRINT METHOD: Screen Print
PACKAGING: Bulk
WEIGHT: 4.5 lbs per 100 Units

200 500 1500 2500 (4A)
Check website for pricing.



HANDLE COLORS



BUTTON TOP COLORS



BLADES



REGULAR BLADE
.125" WIDE HEAD



PHILLIPS
SIZE 0 HEAD



ELECTRICIAN
.125" WIDE HEAD



TECHNICIAN
3/32" (2.4mm) WIDE HEAD

TOPS



#0 PHILLIPS



#1 PHILLIPS



#2 PHILLIPS



7/32" SLOTTED



1/4" SLOTTED



#10 STAR



#15 STAR



MAGNET



VALVE STEM



3/16" HEX
NUT DRIVER



STRAIGHT HEX
(1/16", 5/64", 3/16")



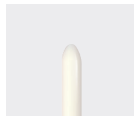
HEX KEY
(1/16", 5/64", 3/32", 3/16")



JEWELER'S/
EYEGLASS



MICRO BLADE



DIP SWITCH



BOTTLE OPENER



CUTTER



LID LIFTER

ITEM 2067 SUPER TRI-AD™ REVERSIBLE SCREWDRIVER

SIZE: 5.38"L x 0.56"W w/Button Top
IMPRINT SIZE: 2.00"L x 0.28"H/Barrel
IMPRINT METHOD: Screen Print
PACKAGING: Bulk
WEIGHT: 4.5 lbs per 100 Units

200 500 1500 2500 (4A)
Check website for pricing.

- Unique 3 sided handle, 25% larger than Tri-Ad™.
- One set up charge includes imprint on 3 sides.
 - Easy-to-change reversible blade with slotted and Phillips heads.
- 19 tool top options for specialized applications.
 - Handy pocket clip.
- Reversible blade and button top are standard, optional tops available at additional cost.



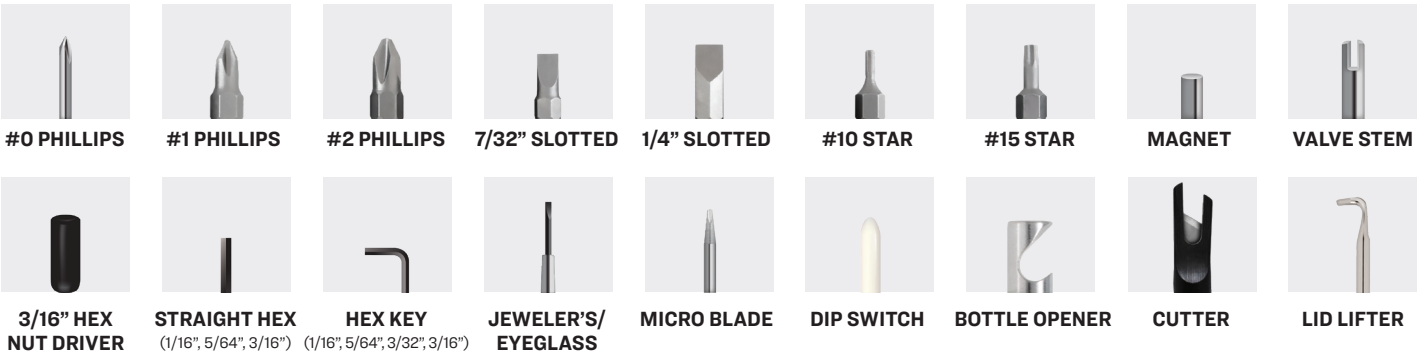
BUTTON TOP COLORS



HANDLE COLORS



TOPS



ITEM 2040 MICRO TOOLS

Perfect for electric work and hard-to-reach spaces.

- 7 tool top and 4 blade options for specialized applications.
- Handy pocket clip.
- Electrician blade and button top are standard, optional blades and tops available at additional cost.

SIZE: 4.00"L x 0.30"W w/Button Top
IMPRINT SIZE: 1.50"L x 0.75"H/Barrel
IMPRINT METHOD: Screen Print
PACKAGING: Bulk
WEIGHT: 2.0 lbs per 100 Units

200 500 1500 2500 (4A)
Check website for pricing.



BLADES



ELECTRICIAN
 .125" WIDE HEAD



PHILLIPS
 SIZE 0 HEAD



MICRO
 SIZE 3MM HEAD



AWL

BUTTON TOP COLORS



BLACK RED GREEN BLUE WHITE

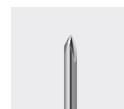
TOPS



MICRO BLADE



**JEWELER'S/
 EYEGLASS**



#0 PHILLIPS



AWL



VALVE STEM



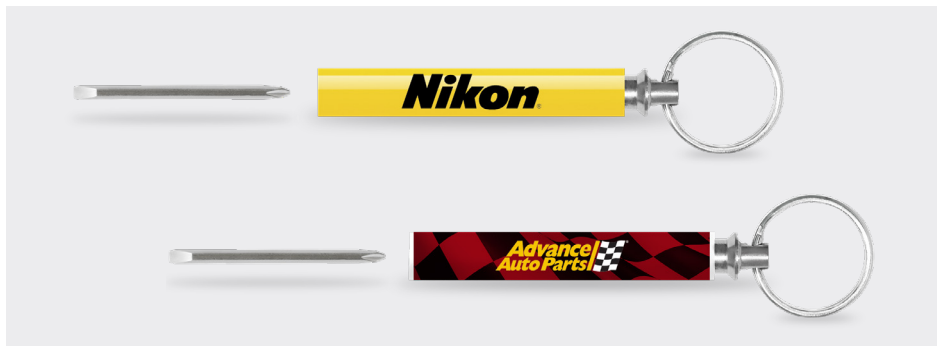
MAGNET

ITEM 2072 REVERSIBLE POCKET PARTNER™ KEY TAG

- Reversible blade stored in body.
- Split key ring.
- Slotted and Phillips blade available.

SIZE: 4.00"L x 0.30"W
IMPRINT SIZE: 1.50"L x 0.75"H/Barrel
IMPRINT METHOD: Screen Print/Full Color Decal
PACKAGING: Poly Bag
WEIGHT: 5.0 lbs per 100 Units

100 250 500 1000 (4A)
Check website for pricing.



HANDLE COLORS



METALLIC GREY RED WHITE BLUE BLACK YELLOW ORANGE GREEN

ITEM 2200 POCKET PARTNER™ KEY TAG

- Split key ring.
- Choice of bottle opener or magnet top.

SIZE: 4.88"L x 1.13"W
IMPRINT SIZE: 2.00"L x 0.94"H/Barrel
IMPRINT METHOD: Screen Print
PACKAGING: Poly Bag
WEIGHT: 5.0 lbs per 100 Units

200 500 1500 2500 (4A)
Check website for pricing.



HANDLE COLORS



METALLIC GREY RED WHITE BLUE BLACK YELLOW ORANGE GREEN



ITEM 2905 4-IN-1 PRECISION SCREWDRIVER

- Handy mini-bit screwdriver with two dual-ended bits:
 - #00mm & #0mm Phillips.
 - 3.0mm & 1.6mm slotted.
- Available in blue, smoke, or red.

SIZE: 5.25"L x 0.63"W
IMPRINT SIZE: 1.75"L x 0.69"H/Barrel
IMPRINT METHOD: Screen Print
PACKAGING: Poly Bag
WEIGHT: 2.0 lbs per 100 Units

200 500 1500 2500 (4A)
Check website for pricing.



ITEM 2054 SUPER TRI-AD™ 4-IN-1 SCREWDRIVER

- Larger Tri-Ad™ handle with bit storage, includes three bits:
 - 7/32" slotted, #1 Phillips & #2 Phillips.
- Carbon steel shaft.
- Can function as 5/16" hex driver.
- Available in red or white.

SIZE: 5.13"L x 0.69"W
IMPRINT SIZE: 2.00"L x 0.25"H/Barrel
IMPRINT METHOD: Screen Print
PACKAGING: Poly Bag
WEIGHT: 10.5 lbs per 100 Units

100 250 500 1000 (4A)
Check website for pricing.

ITEM 2044 6-IN-1 SCREWDRIVER

- Heavy-duty, easy-grip screwdriver with two dual ended bits:
 - #1 Phillips & 3/16" slotted blade.
 - #2 Phillips & 1/4" slotted blade.
- Can function as 1/4" & 5/16" hex driver.
- Available in blue, red, or black.

SIZE: 7.00"L x 1.00"W
IMPRINT SIZE: 2.00"L x 0.63"H/Handle
IMPRINT METHOD: Screen Print
PACKAGING: Poly Bag
WEIGHT: 29.0 lbs per 100 Units

100 250 500 1000 (4A)
Check website for pricing.



HAND TOOLS



ITEM 2901 MAGNETIC LEVEL

Great for onsite, quick leveling needs.

- Torpedo style plastic body with magnetic back.
- Three easy-to-read vials.
 - Level, Plumb, and 45 degree.
- Convenient top view center vial.
- Available in yellow.

SIZE: 9.00"L x 1.50"W x 0.63"D

IMPRINT SIZE: 2.50"L x 0.50"H/Top

IMPRINT METHOD: Screen Print

PACKAGING: Poly Bag

WEIGHT: 15.5 lbs per 100 Units

100 250 500 1000 (4A)

Check website for pricing.

ITEM 2269 16 OZ HAMMER

Designed for balanced comfort and control, shock-reducing grip.

- Carbon steel head.
- Black rubberized handle.
- Magnetic nail starter head.
- Available in yellow.

SIZE: 13.00"L x 5.00"W

IMPRINT SIZE: 2.50"L x 0.55"H/Neck

IMPRINT METHOD: Pad Print/Full Color Decal

PACKAGING: Poly Bag

WEIGHT: 1.5 lbs per 1 Unit

50 100 250 500 (4A)

Check website for pricing.



NEW ITEM

ITEM 2277 MINI PLIER MULTI TOOL

Constructed out of stainless steel – perfect utility accessory and convenient for home, office or on the go.

- Features pliers, bottle opener, three screwdrivers, knife blade, lid lifter, can opener, file, and serrated blade.
- Includes carry pouch.
- Available in gunmetal.

SIZE: 2.78"L x 1.25"W x 0.63"D
IMPRINT SIZE: 1.00"L x 0.20"H/Handle
IMPRINT METHOD: Laser Engrave
PACKAGING: Poly Bag
WEIGHT: 20.0 lbs per 100 Units

100 250 500 1000 (4A)
Check website for pricing.



ITEM 2261 PLIER MULTI TOOL

Constructed out of stainless steel – most versatile tool for any situation.

- Features pliers, bottle opener, three screwdrivers, knife blade, saw blade, can opener, file, and fish scaler.
- Includes carry pouch.
- Available in gunmetal.

SIZE: 4.00"L x 1.75"W x 0.75"D
IMPRINT SIZE: 1.00"L x 0.30"H/Handle
IMPRINT METHOD: Laser Engrave
PACKAGING: Poly Bag
WEIGHT: 48.0 lbs per 100 Units

50 100 150 250 (4A)
Check website for pricing.



NEW ITEM

ITEM 2591 SOFT VINYL TAPE MEASURE

Perfect for easily measuring almost anything.

- Flexible coated fabric tape with metal clip to hold tape in place.
 - 60"/150 cm.
 - Available in white.

SIZE: 1.75"L x 0.50"W x 0.75"D
IMPRINT SIZE: 1.25"L x 0.38"H/Tag
IMPRINT METHOD: Pad Print
PACKAGING: Poly Bag
WEIGHT: 4.0 lbs per 100 Units

200 500 1500 2500 (4A)
Check website for pricing.



ITEM 2098 6 FT CARABINER TAPE MEASURE

Easy to store in your pocket or on your keyring.

- Metal tape measure, plastic body.
 - Inch and centimeter markings.
 - Available in blue or smoke.

SIZE: 2.63"L x 1.88"W
IMPRINT SIZE: 0.83" Dia./One Color
 1.00" Dia./Full Color Decal
IMPRINT METHOD: Pad Print/Full Color Decal
PACKAGING: Poly Bag
WEIGHT: 10.0 lbs per 100 Units

200 500 1500 2500 (4A)
Check website for pricing.



ITEM 2199 10 FT TAPE MEASURE

Clips to your tool belt for quick and easy access, built for high-impact construction.

- Heavy-duty tape measure with non-slip grip base and blade locking mechanism.
- Inch and fraction markings.
- Belt clip.
- Available in yellow.

SIZE: 2.75"L x 2.25"W
IMPRINT SIZE: 1.40"L x 1.10"H/Front
IMPRINT METHOD: Full Color Decal
PACKAGING: Box
WEIGHT: 26.5 lbs per 100 Units

100 250 500 1000 (4A)

Check website for pricing.



ITEM 2099 16 FT CARABINER TAPE MEASURE

Clips to your tool belt for quick and easy access, built for high-impact construction, long extension.

- Rubberized base with non-slip grip and blade locking mechanism.
- Easily attachable carabiner and belt clip.
- Inch and centimeter markings.
- Available in yellow.

SIZE: 4.00"L x 3.00"W
IMPRINT SIZE: 1.25" Dia./Front
IMPRINT METHOD: Digital Print
PACKAGING: Box
WEIGHT: 44.0 lbs per 100 Units

50 100 150 250 (4A)

Check website for pricing.



ITEM 2509 25 FT CARABINER TAPE MEASURE

Clips to your tool belt for quick and easy access, built for high-impact construction, even longer extension.

- Rubberized base with non-slip grip and blade locking mechanism.
- Easily attachable carabiner and belt clip.
- Inch and centimeter markings.
- Available in yellow.

SIZE: 4.50"L x 3.30"W
IMPRINT SIZE: 1.50" Dia./Front
IMPRINT METHOD: Digital Print
PACKAGING: Box
WEIGHT: 53.0 lbs per 100 Units

50 100 150 250 (4A)

Check website for pricing.



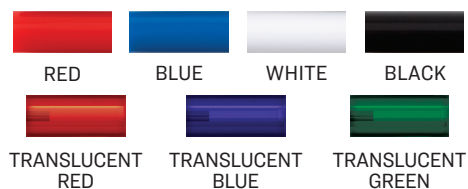
ITEM 2082 MAGNETIC PICK UP TOOL

Great for retrieving small metal parts behind confined areas.

- 25" telescoping shaft, retrieves up to 1 pound.
- Strong and compact, handy pocket clip.
- Full color decal available on white handle only.

SIZE: 5.00"L x 0.50"W
IMPRINT SIZE: 2.00"L x 1.25"H/Barrel
IMPRINT METHOD: Screen Print/Full Color Decal
PACKAGING: Poly Bag
WEIGHT: 6.5 lbs per 100 Units
 50 100 150 250 (4A)
Check website for pricing.

HANDLE COLORS



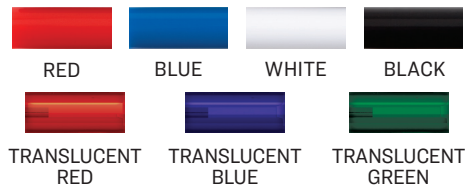
ITEM 2292 INSPECTION MIRROR/PICKUP TOOL

Great for finding and retrieving small metal parts behind confined areas.

- 25" telescoping shaft, retrieves up to 1 pound.
- Strong and compact, handy pocket clip.
- 1.5" pivoting mirror.
- Full color decal available on white handle only.

SIZE: 7.38"L x 1.50"W
IMPRINT SIZE: 2.00"L x 1.25"H/Barrel
IMPRINT METHOD: Screen Print/Full Color Decal
PACKAGING: Poly Bag
WEIGHT: 13.0 lbs per 100 Units
 50 100 150 250 (4A)
Check website for pricing.

HANDLE COLORS



ITEM 2930 LIGHTED MAGNETIC GRIPPER PICKUP TOOL

Great for finding and retrieving small metal parts behind confined areas.

- 23" fully extended, retrieves up to 3 pounds.
- Twist-action on/off LED light with magnetic tip illuminates dark, hard to reach areas.
- Handle available in red or yellow trim.
- 3-AG13 batteries included.

SIZE: 7.55"L x 0.69"W
IMPRINT SIZE: 2.25"L x 0.30"H/Handle
IMPRINT METHOD: Pad Print
PACKAGING: Poly Bag
WEIGHT: 17.0 lbs per 100 Units

100 250 500 750 (4A)
Check website for pricing.



ITEM 2938 TELESCOPING FLEX FLASHLIGHT

Great for finding and retrieving small metal parts behind confined areas.

- Metal body with magnetic base.
- Flexible magnetic tip with three bright LED lights can retrieve up to 3 lbs and extend 22".
- Push on/off button, 4-LR44 batteries included.
- Available in black or blue.

SIZE: 6.56"L x 0.81"W
IMPRINT SIZE: 2.00"L x 0.38"H/Front
IMPRINT METHOD: Laser Engrave
PACKAGING: Poly Bag
WEIGHT: 24.0 lbs per 100 Units

50 100 150 250 (4A)
Check website for pricing.

LIGHTS



LED

LED (light-emitting diode) is a semiconductor diode that emits high-efficiency, low-intensity light.



CREE

Cree lights are LEDs made with silicon carbide, generating higher intensity light.



COB

COB (chip on board) lights are LEDs mounted directly onto a circuit board, creating super high intensity light.



ITEM 2957 COB VANGUARD FLASHLIGHT

- Aluminum body with cutting-edge COB technology.
- Push on/off button, convenient wrist strap.
- 3-AAA batteries included.
- Available in black.

SIZE: 3.25"L x 1.00"W
IMPRINT SIZE: 1.00"L x 0.60"H/Side
IMPRINT METHOD: Laser Engrave
PACKAGING: Box
WEIGHT: 14.0 lbs per 100 Units

100 250 500 1000 (4A)
Check website for pricing.



ITEM 2946 MAGNETIC METAL FLASHLIGHT

- Metal body with 9 bright LED lights.
- 2 magnets on side of body.
- Push on/off button, convenient wrist strap.
- 3-AAA batteries included.
- Available in pewter.

SIZE: 3.87"L x 1.15"W
IMPRINT SIZE: 1.00"L x 0.50"H/Side
IMPRINT METHOD: Laser Engrave
PACKAGING: Poly Bag
WEIGHT: 18.0 lbs per 100 Units

50 100 150 250 (4A)
Check website for pricing.

ITEM 2969 SWIVEL FLASHLIGHT

Heavy duty aluminum flashlight with swiveling head – ideal for camping, emergencies, and automobile incidents.

- Cree flashlight with COB ring light.
- COB ring features red flashing function.
- Magnetic base and pocket clip.
- 4AAA batteries included.
- Available in black.

SIZE: 5.75"L x 1.60"W
IMPRINT SIZE: 1.25"L x 0.375"H
IMPRINT METHOD: Pad Print
PACKAGING: Box
WEIGHT: 32.0 lbs per 100 Units

50 100 150 250 (4A)
Check website for pricing.

NEW ITEM



CREE FLASHLIGHT



COB RING



RED FLASHING



MAGNETIC BASE



180°
 ROTATING
 HEAD

NEW ITEM



FLEXIBLE BAND STRETCHES TO WRAP
AROUND KEYRING OR HANDLEBARS

ITEM 2929 SILICONE BAND LIGHT

Wraps around wrist or key ring on handlebars when biking, running, hiking, or camping.

- Aluminum body 30 lumen LED light with on/off functions.
- Flexible silicone strap.
- 3 LR44 batteries included.
- Available in silver, blue or pink.

SIZE: 2.375"L x 0.875"W x 0.375"D

IMPRINT SIZE: 2.00"L x 0.50"H /Front, 1.00"L x 0.50"H/ Back

IMPRINT METHOD: Laser Engrave

PACKAGING: Poly Bag

WEIGHT: 8.0 lbs per 100 Units

250 500 750 1000 (4A)

Check website for pricing.



ITEM 2919 SOLAR CARABINER CLIP LIGHT

Extremely bright, easily attaches to belt loops and backpacks.

- Silicone matte finish body, on/off switch, solar panel on back side.
- 8 hour solar charge = 3 hours light.
- 2 LED lights.
- Carabiner spring clip.
- Available in black.

SIZE: 4.06"L x 1.58"W

IMPRINT SIZE: 1.75"L x 0.75"H/ Front

IMPRINT METHOD: Screen Print

PACKAGING: Poly Bag

WEIGHT: 6.0 lbs per 100 Units

100 250 500 1000 (4A)

Check website for pricing.

ITEM 2902 KEY LIGHT

Handy LED light for finding door locks in dark situations.

- Fits most keys – adds no additional bulk to keychain.
- Push button switch, batteries included.
- Available in black.

SIZE: 1.63"L x 1.13"W

IMPRINT SIZE: 0.81"L x 0.75"H/Back

IMPRINT METHOD: Screen Print

PACKAGING: Poly Bag

WEIGHT: 1.5 lbs per 100 Units

200 500 1500 2500 (4A)

Check website for pricing.



ITEM 2933 FLEX LIGHT WITH LASER

- Magnetic bottom.
- LED light with flexible neck, red laser in body.
- Push on/off button.
- 3-LR41 batteries included.
- Available in black, red, blue, silver.

SIZE: 6.50"L x 0.63"W

IMPRINT SIZE: 1.29"L x 0.31"H/Barrel

IMPRINT METHOD: Laser Engrave

PACKAGING: Poly Bag

WEIGHT: 6.0 lbs per 100 Units

100 250 500 1000 (4A)

Check website for pricing.



ITEM 2927 MAGNETIC POCKET LIGHT

- Sleek pocket light with magnetic clip.
- On/off push button.
- 2-AAA batteries included.
- Available in black or blue.

SIZE: 5.48"L x 0.48"W

IMPRINT SIZE: 3.80"L x 0.25"H/Barrel

IMPRINT METHOD: Laser Engrave

PACKAGING: Poly Bag

WEIGHT: 4.5 lbs per 100 Units

100 250 500 1000 (4A)

Check website for pricing.





ITEM 2960 COB PUCK LIGHT

Perfect for hanging in storage unit, pantry, basement, car, or cupboard.

- Extreme COB light intensity – 100 lumens.
- Magnet back and swivel 360 degree hook.
- On/off button.
- 3-AAA batteries included.
- Available in black.

SIZE: 2.75" Dia. x 1.50"D

IMPRINT SIZE: 1.00"L x 0.50"H/Side

IMPRINT METHOD: Pad Print

PACKAGING: Poly Bag

WEIGHT: 11.0 lbs per 100 Units

100 250 500 1000 (4A)

Check website for pricing.



ITEM 2959 FROSTED CARABINER DOME LIGHT

Perfect for camping or hiking.

- 6 LED lights with high, low and strobe functions.
- Magnet and carabiner handle on back for multipurpose use.
- On/off button.
- 3-AAA batteries included.
- Available in black with frost.

SIZE: 2.75" Dia. x 1.63"D

IMPRINT SIZE: 2.25" Dia./Top

IMPRINT METHOD: Digital Print

PACKAGING: Poly Bag

WEIGHT: 12.1 lbs per 100 Units

50 100 150 250 (4A)

Check website for pricing.



ITEM 2948 POP UP LANTERN

Perfect for outdoor activities.

- Twist-action, puck-to-pop-up bright lantern lighting with high, low and strobe functions.
- Magnetic back with 360° swivel hook and metal D-hook.
- Push on/off button.
- 3-AAA batteries included.
- Available in black with frost.

SIZE: 5.125"L x 3.25"W

IMPRINT SIZE: 2.50" Dia. Minus 1.00" Center Dia./Top

IMPRINT METHOD: Digital Print

PACKAGING: Poly Bag

WEIGHT: 44.0 lbs per 100 Units

50 100 150 250 (4A)

Check website for pricing.

ITEM 2964 FLIP LANTERN

Versatile, perfect to use as camping lantern, flashlight, and tent light.

- Bullet style lantern with flexible rope handle and reversible COB puck light, switch on base.
- On/off functions.
- 3AAA batteries included.
- Available in black with frost.

SIZE: 3.00"Dia. x 6.50"H
IMPRINT SIZE: 1.50"L x 2.00"H
IMPRINT METHOD: Pad Print
PACKAGING: Box
WEIGHT: 35.0 lbs per 100 Units

50 100 150 250 (4A)
Check website for pricing.



REVERSIBLE PUCK LIGHT
 TURNS LANTERN INTO FLASHLIGHT



ITEM 2967 PORTABLE COB LANTERN/FLASHLIGHT

Versatile, perfect to use as camping lantern, flashlight, and tent light.

- Unique hanging COB lantern with removable flashlight.
- 3-AAA batteries included.
- Compact, portable, and lightweight.
- Available in black with frost.

SIZE: 4.10"L x 5.60"W/Lantern, 3.80"L x 1.25"W/Flashlight
IMPRINT SIZE: 2.00"L x 2.00"H/Lantern
OPTIONAL IMPRINT SIZE: 1.00"L x 0.25"H/Flashlight
IMPRINT METHOD: Pad Print
PACKAGING: Box
WEIGHT: 52.0 lbs per 100 Units

50 100 150 250 (4A)
Check website for pricing.

ITEM 2973 SQUARE WORKLIGHT

Intensely bright, illuminates any dim-lit workspace.

- Cutting-edge COB light technology with on/off functions.
- Silicone finish body with dual magnetic stand.
- 4 AAA batteries included.
- Available in black.

SIZE: 3.00"L x 3.00"W/Light Face,
4.75"L x 3.50"W/Light Face with Legs
IMPRINT SIZE: 2.40"L x 0.85"H/Light Face,
3.00"L x 0.55"H/Leg
IMPRINT METHOD: Pad Print
PACKAGING: Box
WEIGHT: 33.0 lbs per 100 Units

50 100 250 500 (4A)
Check website for pricing.



ITEM 2971 CYCLOPS COB WORKLIGHT

Intensely bright, illuminates any dim-lit workspace.

- Cutting-edge COB light technology with high, low and strobe functions.
- Magnetic base with screw slots for easy fastening to any surface.
- Removable light for convenient hand held use.
- 3 AAA batteries included.
- Available in white.

SIZE: 3.00"L x 3.00"W
IMPRINT SIZE: 1.00"L x 1.00"H/Back of Light
IMPRINT METHOD: Pad Print
PACKAGING: Box
WEIGHT: 50.0 lbs per 100 Units

50 100 250 500 (4A)
Check website for pricing.

MAGNETIC BOWLS



ITEM 2516 MINI MAGNETIC ACCESSORY BOWL

Ideal for storing and organizing small items (nuts, bolts, clips) at your desk or work space – use at any angle.

- 3" stainless steel bowl
- 1.625" magnet on bottom.
- Rubber coated magnetic base prevents scratches on finished surfaces.
- Available in stainless steel.

SIZE: 3.00"Dia. x 1.25"D

IMPRINT SIZE: 1.25"Dia./Laser Engrave

1.50"Dia./Full Color Decal

IMPRINT METHOD: Laser Engrave/Full Color Decal

PACKAGING: Poly Bag

WEIGHT: 18.0 lbs per 100 Units

100 250 500 1000 (4A)

Check website for pricing.



ITEM 2515 MAGNETIC PARTS BOWL

Ideal for storing small parts (hardware, fasteners) while you work in your garage or workshop – use at any angle.

- 6" stainless steel magnetic bowl.
- 1.625" magnet on bottom.
- Rubber coated magnetic base prevents scratches on finished surfaces.
- Available in stainless steel.

SIZE: 6.00"Dia. x 1.50"D

IMPRINT SIZE: 2.00"L x 1.75"H/Laser Engrave

3.00" Dia/Full Color Decal

IMPRINT METHOD: Laser Engrave/Full Color Decal

PACKAGING: Poly Bag

WEIGHT: 36.5 lbs per 100 Units

50 100 250 500 (4A)

Check website for pricing.

AUTO ACCESSORIES



ITEM 2463 BUDGET TIRE GAUGE

- 10-75 PSI range.
- Plastic body, pocket clip.
- Available in blue or red.

SIZE: 6.00"L x 1.00"W
IMPRINT SIZE: 2.00"L x 0.30"H/Barrel
IMPRINT METHOD: Pad Print
PACKAGING: Poly Bag
WEIGHT: 5.5 lbs per 100 Units

200 500 1500 2500 (4A)
Check website for pricing.



ITEM 2425 REGULAR TIRE GAUGE

- 10-50 PSI range.
- Metal body, plastic head, pocket clip.
- Available in satin finish.

SIZE: 5.75"L x 0.75"W
IMPRINT SIZE: 2.00"L x 0.75"H/Barrel
IMPRINT METHOD: Screen Print
PACKAGING: Poly Bag
WEIGHT: 5.0 lbs per 100 Units

100 250 500 1000 (4A)
Check website for pricing.



ITEM 2460 HIGH PRESSURE TIRE GAUGE

- 20-120 PSI range.
- Metal head and body, pocket clip.
- Available in chrome finish.

SIZE: 5.75"L x 0.75"W
IMPRINT SIZE: 2.00"L x 0.75"H/Barrel
IMPRINT METHOD: Screen Print
PACKAGING: Poly Bag
WEIGHT: 7.5 lbs per 100 Units

100 250 500 1000 (4A)
Check website for pricing.



ITEM 2524
AUTO ESCAPE TOOL

- Designed to help prevent automotive entrapment.
- Hardened steel point shatters vehicle windows.
- Protected razor-sharp blade cuts through seat belt.
- Available in white.

SIZE: 6.50"L x 3.00"W
IMPRINT SIZE: 3.00"L x 0.60"H/Front
IMPRINT METHOD: Screen Print
PACKAGING: Poly Bag
WEIGHT: 14.0 lbs per 100 Units
 200 500 750 1500 (4A)
Check website for pricing.



ITEM 2473
TIRE DEPTH GAUGE

- Stainless steel cover, ABS plastic gauge and handle.
- Measures up to 25mm.
- Available in chrome finish.

SIZE: 3.50"L x 1.00"W
IMPRINT SIZE: 0.80"L x 0.25"H/Barrel
IMPRINT METHOD: Pad Print
PACKAGING: Poly Bag
WEIGHT: 2.5 lbs per 100 Units

200 500 750 1000 (4A)
Check website for pricing.

CUTTING TOOLS



ITEM 2009 2-IN-1 MARKER/CUTTER

- Four section blade with locking slide.
- Felt tip permanent marker.
- Slotted cap for snapping off dull blade pieces.
- Available in blue or black.

SIZE: 5.38"L x 0.75"W

IMPRINT SIZE: 3.00"L x 0.75"H/Screen Print
3.50"L x 1.625"H/Full Color Decal

IMPRINT METHOD: Screen Print/Full Color Decal

PACKAGING: Poly Bag

WEIGHT: 5.0 lbs per 100 Units

200 500 1500 2500 (4A)

Check website for pricing.



ITEM 2004 SAFETY CUTTER KEY TAG

- Spring loaded auto-retractable blade.
- Split key ring, plastic body.
- Available in white.

SIZE: 2.75"L x 1.25"W

IMPRINT SIZE: 1.50"L x 0.75"H/Handle

IMPRINT METHOD: Screen Print

PACKAGING: Poly Bag

WEIGHT: 3.0 lbs per 100 Units

200 500 1500 2500 (4A)

Check website for pricing.

ITEM 2001 FLIP-IT SAFETY CUTTER

- Ambidextrous design for left or right handed users.
- Spring auto retracting stainless steel blade with comfortable, ergonomic grip.
- Available in blue or yellow.

SIZE: 5.13"L x 1.13"W

IMPRINT SIZE: 2.75"L x 0.63"H/Screen Print
2.50"L x 0.65"H/Full Color Decal

IMPRINT METHOD: Screen Print/Full Color Decal

PACKAGING: Poly Bag

WEIGHT: 5.5 lbs per 100 Units

200 500 1500 2500 (4A)

Check website for pricing.



ITEM 2122 BOX CUTTER/SCRAPER

- Single-edge retractable safety razor blade.
- Metal body and cover.
- Removable blade for use as a scraper.
- Available in white.

SIZE: 4.13"L x 0.88"W

IMPRINT SIZE: 2.50"L x 0.65"H/Screen Print
2.80"L x 0.75"H/Full Color Decal

IMPRINT METHOD: Screen Print/Full Color Decal

PACKAGING: Bulk

WEIGHT: 6.0 lbs per 100 Units

200 500 1500 2500 (4A)

Check website for pricing.





ITEM 2020 SMALL SNAP BLADE CUTTER

- Compact, lightweight and ergonomic design.
- Removable slotted top to break blades.
- Plastic body, handy pocket clip, locking slide.
- Available in white or yellow.

SIZE: 5.00"L x 0.75"W

IMPRINT SIZE: 2.00"L x 0.28"H/Handle

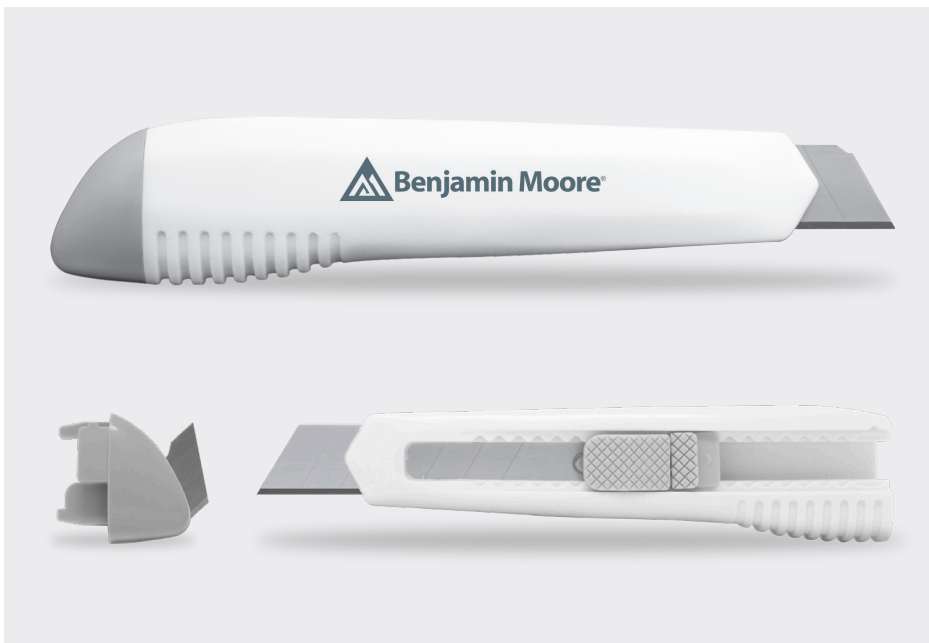
IMPRINT METHOD: Screen Print

PACKAGING: Poly Bag

WEIGHT: 3.0 lbs per 100 Units

200 500 1500 2500 (4A)

Check website for pricing.



ITEM 2021 LARGE SNAP BLADE CUTTER

- Compact, lightweight and ergonomic design.
- Removable slotted top safely breaks blade.
- Plastic body, locking slide.
- Available in white.

SIZE: 6.38"L x 1.38"W

IMPRINT SIZE: 2.00"L x 0.44"H/Handle

IMPRINT METHOD: Screen Print

PACKAGING: Poly Bag

WEIGHT: 9.0 lbs per 100 Units

200 500 1500 2500 (4A)

Check website for pricing.



ITEM 2271 6" WIRE CUTTERS

- Strong and durable, used for heavyweight construction.
- High-quality carbon steel.
- Double-dipped grip handles for comfortable, non-slip usage.
- Available in black with yellow trim.

SIZE: 6.29"L x 2.00"W

IMPRINT SIZE: 1.25"L x 0.20"H/Handle

IMPRINT METHOD: Pad Print

PACKAGING: Poly Bag

WEIGHT: 40.0 lbs per 100 Units

100 250 500 1000 (4A)

Check website for pricing.



ITEM 2024 UTILITY SCISSORS WITH MAGNETIC HOLDER

- Stainless steel construction with serrated edge.
- Jar lid opener/gripper
- Magnetic plastic blade sheath for convenient access.
- Soft silicone grips for comfortable use.
- Handle color available in black, white, or neon green. Grey sheaths available on any color.

SIZE: 8.75"L x 3.38"W
IMPRINT SIZE: 2.25"L x 0.75"H/Sheath
IMPRINT METHOD: Digital Print
PACKAGING: Poly Bag
WEIGHT: 30.0 lbs per 100 Units

100 250 500 1000 (4A)
Check website for pricing.

DRINK ACCESSORIES



ITEM 2523 CREDIT CARD BOTTLE OPENER

- High-grade stainless steel construction.
- Easily fits in wallets and pockets.
- Available in stainless steel.

SIZE: 3.30"L x 2.10"W

IMPRINT SIZE: 2.00"L x 1.50"H/Front

IMPRINT METHOD: Laser Engrave

PACKAGING: Poly Bag

WEIGHT: 10.0 lbs per 100 Units

200 500 750 1000 (4A)

Check website for pricing.



ITEM 2534 7" BOTTLE OPENER

- Slim, compact, and durable - constructed from high-grade stainless steel.
- Flat pocket opener on one end, hole for pulling bottles out of ice on the other end.
- Available in stainless steel.

SIZE: 7.00"L x 1.50"W

IMPRINT SIZE: 3.00"L x 1.00"H/Front

IMPRINT METHOD: Laser Engrave

PACKAGING: Poly Bag

WEIGHT: 17.0 lbs per 100 Units

100 250 500 1000 (4A)

Check website for pricing.

ITEM 2536 DOUBLE DUTY BOTTLE OPENER

- Bottle opener/fidget spinner in one.
- Plastic body with metal tabs.
- Perfect for keeping your hands busy and mind clear.
- Available in black.

SIZE: 3.20"L x 1.55"W
IMPRINT SIZE: 0.50" Dia./Center
IMPRINT METHOD: Pad Print
PACKAGING: Poly Bag
WEIGHT: 8.0 lbs per 100 Units

200 500 1500 2500 (4A)
Check website for pricing.



ITEM 2537 BOTTLE CAP SHAPED BOTTLE OPENER

- Small, compact, and durable – fits in the palm of your hand.
- Use for both twist off and pop top bottles.
- Magnetic back for convenient access.
- Available in white.

SIZE: 3.00" Dia.
IMPRINT SIZE: 2.50" Dia./Top
IMPRINT METHOD: Digital Print
PACKAGING: Box
WEIGHT: 15.0 lbs per 100 Units

200 500 1500 2500 (4A)
Check website for pricing.



ITEM 2264 MULTI-TOOL CARABINER

- Small, compact, lightweight – perfect outdoor accessory.
- Metal body with expandable knife, LED light, bottle opener and carabiner clip.
- 3-LR621 batteries included.
- Available in gunmetal.

SIZE: 3.53"L x 1.50"W
IMPRINT SIZE: 1.45"L x 0.70"H/Front
IMPRINT METHOD: Laser Engrave
PACKAGING: Poly Bag
WEIGHT: 5.5 lbs per 100 Units

100 250 500 1000 (4A)
Check website for pricing.





ITEM 1922 ABSORBING STONE CAR COASTER

- Naturally absorbant ceramic stone - absorbs condensation from drinks.
- Fits most cup holders, finger notch for easy removal.
- Available in white.

SIZE: 2.50" Dia.
IMPRINT SIZE: 2.13" Dia./Top
IMPRINT METHOD: Digital Print
PACKAGING: Poly Bag
WEIGHT: 9.0 lbs per 100 Units

200 500 750 1000 (4A)
Check website for pricing.

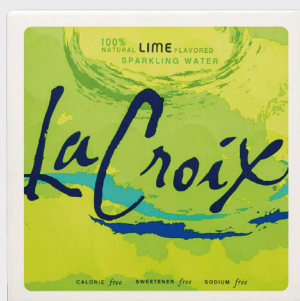


ITEM 1923 ABSORBING STONE COASTER

- Naturally absorbant ceramic stone - absorbs condensation from drinks.
- Non-slip, scratch resistant cork back - grips tightly to surfaces.
- Packaged in kraft window tuck box.
- Available in white.

SIZE: 3.94"L x 3.94"W
IMPRINT SIZE: 3.50"L x 3.50"H/Front
IMPRINT METHOD: Digital Print
PACKAGING: Box
WEIGHT: 27.6 lbs per 100 Units

200 500 750 1000 (4A)
Check website for pricing.



ITEM 1923SET ABSORBING STONE COASTER SET

- Set of four Absorbing Stone Coasters packaged in a gift box with clear lid.
- Four different imprints for one set up charge.

SIZE: 3.94"L x 3.94"W
IMPRINT SIZE: 3.50"L x 3.50"H/Front
IMPRINT METHOD: Digital Print
PACKAGING: Gift Box
WEIGHT: 27.6 lbs per 25 Units

50 100 250 500 (4A)
Check website for pricing.

ITEM 2532 MAGNETIC COASTER WITH BOTTLE OPENER

- Magnetic, high-impact, heat-resistant plastic coaster.
- Nickel plated opener.
- Non-skid rubber base.
- Available in white.

SIZE: 3.35"L x 3.35"W
IMPRINT SIZE: 3.22"L x 3.22"H/Front
IMPRINT METHOD: Digital Print
PACKAGING: Poly Bag
WEIGHT: 9.0 lbs per 100 Units

200 500 750 1000 (4A)
Check website for pricing.



ITEM 2532SET MAGNETIC COASTER BOTTLE OPENER SET

- Set of four Magnetic Coaster Bottle Openers packaged in a gift box with clear lid.
- Four different imprints for one set up charge.

SIZE: 3.35"L x 3.35"W
IMPRINT SIZE: 3.22"L x 3.22"H/Front
IMPRINT METHOD: Digital Print
PACKAGING: Gift Box
WEIGHT: 9.0 lbs per 25 Units

50 100 250 500 (4A)
Check website for pricing.



WRITING TOOLS



ITEM 1147 SLIM LOGO TOP PEN

- Metal body with twist action open/close design and nickel pocket clip. Blue ink.
- Available in blue, red, and silver.
- Laser engrave only available on blue and red.

SIZE: 5.50"L x 0.50"W
IMPRINT SIZE: 1.50"L x 0.20"H/Barrel
 0.31" Dia./Epoxy Dome
IMPRINT METHOD: Laser Engrave/
 Screen Print, Epoxy Dome
PACKAGING: Poly Bag
WEIGHT: 4.0 lbs per 100 Units

100 250 500 1000 (4A)
Check website for pricing.



ITEM 1133 & 1134 LOGO TOP PREMIER PEN AND PENCIL

- Metal body with twist action open/close design, writes in black ink or 0.7mm lead.
- Available in black and silver.

SIZE: 5.63"L x 0.50"W
IMPRINT SIZE: 1.50"L x 0.20"H/Barrel
 0.31"Dia./Epoxy Dome
IMPRINT METHOD: Laser Engrave/Epoxy Dome
PACKAGING: Poly Bag
WEIGHT: 1133: 5.7 lbs per 100 Units
 1134: 5.0 lbs per 100 Units

1133 PENCIL

100 250 500 1000 (4A)
Check website for pricing.

1134 PEN

100 250 500 1000 (4A)
Check website for pricing.



ITEM 1138 LOGO TOP PREMIER PEN AND PENCIL SET

- Both logo top premier pen and pencil packaged in a magnetic slider gift box.
- Available in black or silver.

SIZE: 5.63"L x 0.50"W
IMPRINT SIZE: 1.50"L x 0.20"H/Barrel
 0.31"Dia./Epoxy Dome
IMPRINT METHOD: Laser Engrave/Epoxy Dome
PACKAGING: Eco Deluxe Box
WEIGHT: 26.0 lbs per 100 Units

100 250 500 1000 (4A)
Check website for pricing.



ITEM 1144
COBRA PEN

- Plastic body with twist action open/close design, writes in blue ink.
- Small size for pockets or check books.
- Available in black with nickel trim or pearl with gold trim.

SIZE: 4.75"L x 0.38"W
IMPRINT SIZE: 1.50"L x 1.00"H/Barrel
IMPRINT METHOD: Screen Print
PACKAGING: Poly Bag
WEIGHT: 2.0 lbs per 100 Units

200 500 1500 2500 (4A)
Check website for pricing.



ITEM 9051
FLOCKED PEN SLEEVE

SIZE: 7.50"L x 1.25"W

100+ (A)
Check website for pricing.

ITEM 9045
TWO PIECE SLIDER GIFT BOX

SIZE: 6.75"L x 0.75"W
IMPRINT SIZE: 2.50"L x 0.50"H/Top
IMPRINT METHOD: Screen Print

100+ (A)
Check website for pricing.

ITEM 9000
TWO PIECE GIFT BOX

SIZE: 6.63"L x 1.13"W
IMPRINT SIZE: 4.00"L x 0.75"H/Top
IMPRINT METHOD: Screen Print

100+ (A)
Check website for pricing.

ITEM 9027
DOUBLE MAGNETIC GIFT BOX

SIZE: 7.13"L x 2.19"W
IMPRINT SIZE: 5.00"L x 1.00"H/Top
IMPRINT METHOD: Screen Print

100+ (A)
Check website for pricing.

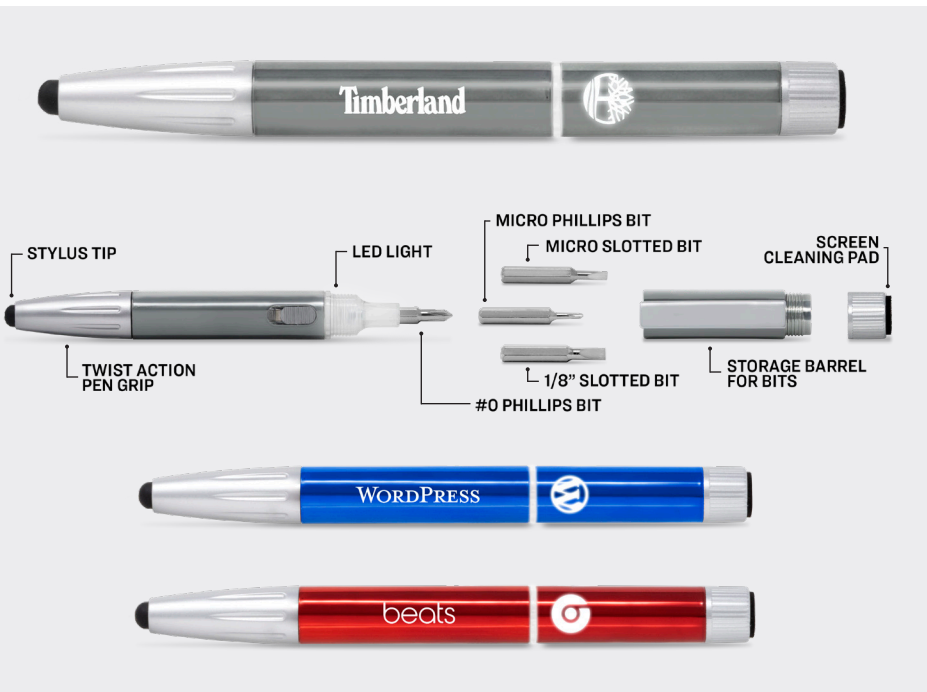


ITEM 1104 SLIM ISTYLUS PEN

- All metal body, twist action open/close design with black ink.
- Stylus tip.
- Available in black, blue, or red.

SIZE: 5.25"L x 0.44"W
IMPRINT SIZE: 1.75"L x 0.19"H/Barrel
IMPRINT METHOD: Laser Engrave
PACKAGING: Poly Bag
WEIGHT: 2.0 lbs per 100 Units

200 500 1500 2500 (4A)
Check website for pricing.

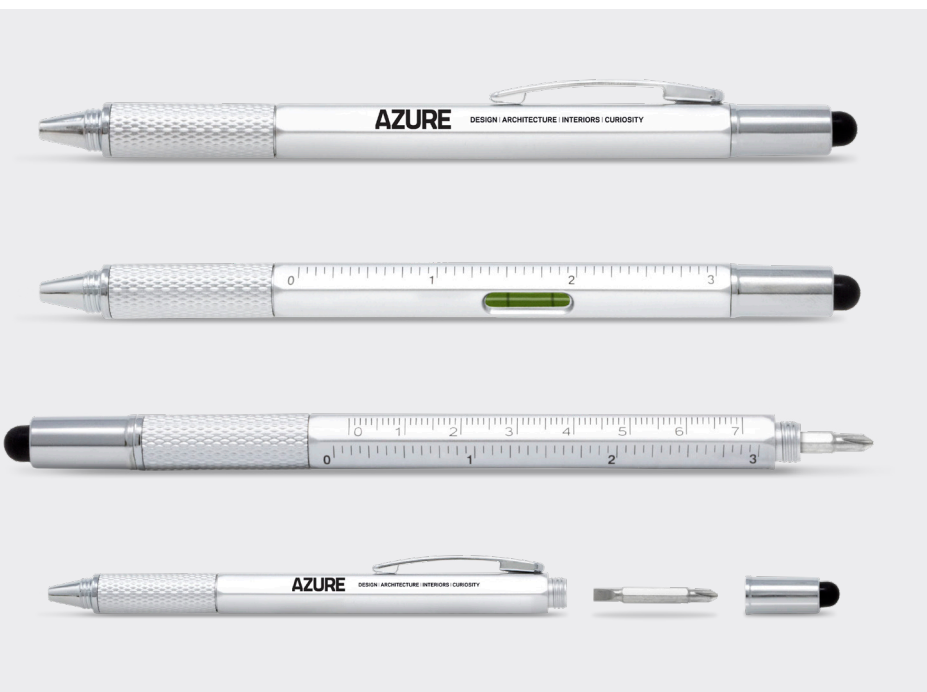


ITEM 1273 8-IN-1 LIGHTED LOGO PEN

- Screen cleaning cap holds four screwdriver bits: 16mm & 3.0mm slotted, #0000 & #0 Phillips.
- Intense LED light to light up your logo and small repair jobs.
- Stylus tip easily transitions between writing and touch screens.
- Twist action open/close design with black ink.
- Available in smoke, blue or red.

SIZE: 5.90"L x 0.70"W
IMPRINT SIZE: 0.40"L x 0.45"H/Cap (Laser Engrave), 0.25"L x 1.50"H/Barrel (Pad Print)
IMPRINT METHOD: Laser Engrave/Pad Print
PACKAGING: Poly Bag
WEIGHT: 7.0 lbs per 100 Units

100 250 500 1000 (4A)
Check website for pricing.



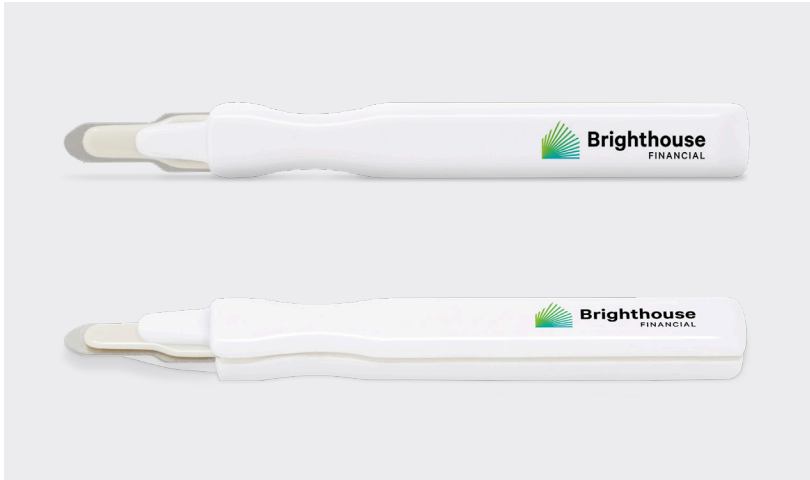
ITEM 1270 6-IN-1 OMEGA PEN

- Level, two rulers, screwdriver bits, stylus tip, and pen all in one.
- Plastic body with twist action open/close design.
- Blue ink, includes 1 bonus ink refill.
- Available in silver.

SIZE: 5.75"L x 0.56"W
IMPRINT SIZE: 2.00"L x 0.16"H/Front
IMPRINT METHOD: Pad Print
PACKAGING: Poly Bag
WEIGHT: 3.0 lbs per 100 Units

200 500 750 1500 (4A)
Check website for pricing.

DESK ACCESSORIES

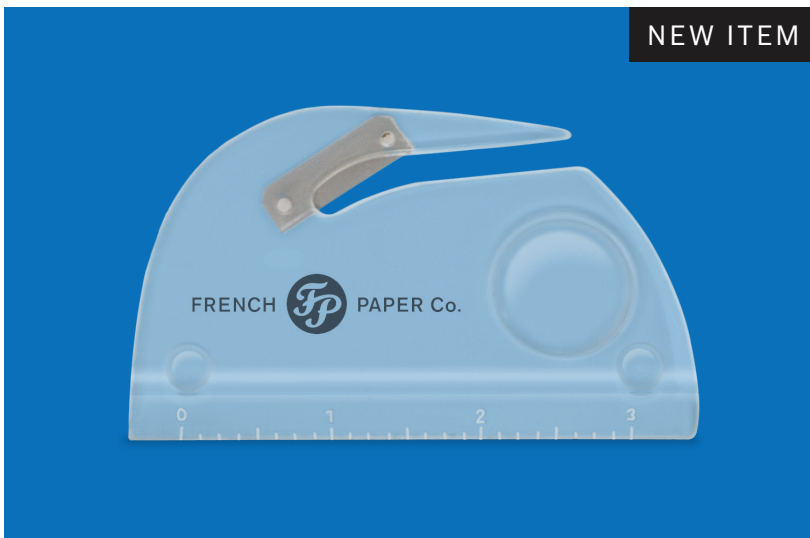


ITEM 1024 STAPLE REMOVER

- Single-slide action removes staples safely and easily.
- ABS plastic body, metal remover.
- Available in white.

SIZE: 5.25"L x 0.56"W
IMPRINT SIZE: 2.25"L x 0.25"H/Handle
IMPRINT METHOD: Digital Print
PACKAGING: Poly Bag
WEIGHT: 4.5 lbs per 100 Units

200 500 750 1000 (4A)
Check website for pricing.



ITEM 1274 3-IN-1 DESK TOOL

- Magnifier, letter opener, and 3" ruler all in one.

SIZE: 3.75"L x 2.25"W x 0.25"D
IMPRINT SIZE: 1.50"L x 0.38"H
IMPRINT METHOD: Screen Print
PACKAGING: Poly Bag
WEIGHT: 6.0 lbs per 100 Units

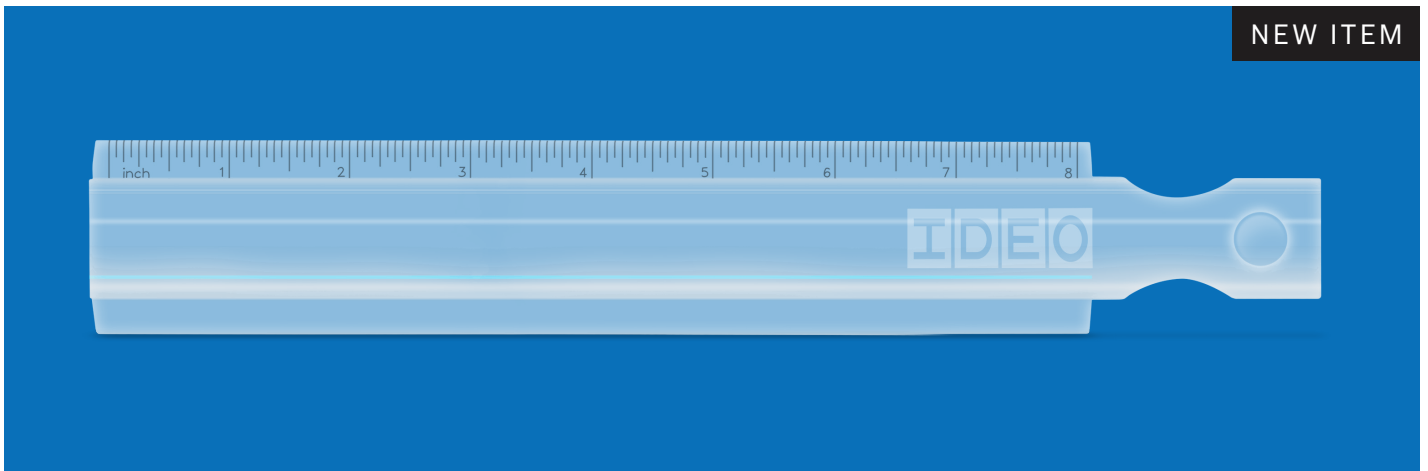
250 500 1000 2500 (4A)
Check website for pricing.

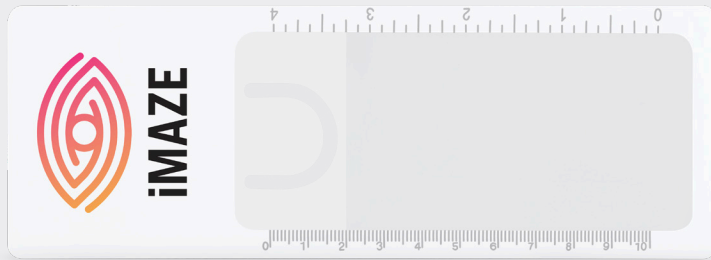
ITEM 1365 RULER/DOUBLE MAGNIFIER

- 8" clear ruler, magnifying bubble on handle.
- Black inch marks, blue placeholder line on opposite side.

SIZE: 10.00"L x 1.38"W x 0.50"D
IMPRINT SIZE: 2.00"L x 0.75"H
IMPRINT METHOD: Laser Engrave/Screen Print
PACKAGING: Poly Bag
WEIGHT: 18.0 lbs per 100 Units

100 250 500 1000 (4A)
Check website for pricing.





ITEM 1228 PAGE MARKER MAGNIFIER

- 4X magnification, Fresnel lens.
- Extra tab to secure to page.
- Side ruler markings in inches and centimeters.
- Available in white.

SIZE: 7.38"L x 2.50"W

IMPRINT SIZE: 2.25"L x 2.00"H/Screen Print
2.50"L x 2.25"H/Digital Print

IMPRINT METHOD: Screen Print/Digital Print

PACKAGING: Cello Sleeve

WEIGHT: 1.0 lbs per 100 Units

200 500 1500 2500 (4A)

Check website for pricing.



ITEM 1201 MAGNIFIER & CREDIT CARD HOLDER

- Stores easily in a purse or wallet for easy access.
- 3X magnification, Fresnel lens.
- Available in white.

SIZE: 3.75"L x 2.38"W

IMPRINT SIZE: 3.00"L x 1.50"H/Front

IMPRINT METHOD: Screen Print/Digital Print

PACKAGING: Bulk

WEIGHT: 1.0 lbs per 100 Units

200 500 1500 2500 (4A)

Check website for pricing.



ITEM 1207 LIGHTED DUO MAGNIFIER

- 3X magnification, 5X magnification bubble.
- LED light on back.
- Available in white.

SIZE: 3.85"L x 2.36"W

IMPRINT SIZE: 1.00"L x 0.70"H/Front

IMPRINT METHOD: Digital Print

PACKAGING: Poly Bag

WEIGHT: 6.0 lbs per 100 Units

100 250 500 1000 (4A)

Check website for pricing.



ITEM 1919 METAL CARD WALLET

- Lightweight, RFID blocking metal body.
- Holds business, credit and insurance cards.
- Interior clip to keep cash and receipts secure.
- Available in silver.

SIZE: 3.65"L x 2.16"W

IMPRINT SIZE: 1.80"L x 1.00"H/Front

IMPRINT METHOD: Laser Engrave

PACKAGING: Poly Bag

WEIGHT: 7.5 lbs per 100 Units

100 250 500 750 (4A)

Check website for pricing.

ITEM 1364 PRESIDENTIAL JOURNAL

- Textured finish with rounded corners and ribbon place marker.
- 96 sheets of lined perforated paper.
- Elastic strap closer and pen holder.
- Available in black, blue, and brown.

SIZE: 8.25"L x 5.75"W

IMPRINT SIZE: 4.00"L x 5.00"H/Front

IMPRINT METHOD: Screen Print

PACKAGING: Poly Bag

WEIGHT: 68.1 lbs per 100 Units

50 100 250 500 (4A)

Check website for pricing.



ITEM 1364BK-BX TWO PIECE GIFT BOX

SIZE: 8.50"L x 6.00"W

IMPRINT SIZE: 4.00"L x 5.00"H/Front

IMPRINT METHOD: Screen Print

100+ (A)

Check website for pricing.



ITEM 1342 ECO PASSWORD PAD

- Alphabetized pages with space for account, username, password hint, and password.
- Coated cover with metal ring binding and elastic band.
- Made from recycled materials.
 - Available in black or blue.

SIZE: 6.00"L x 4.00"W

IMPRINT SIZE: 2.00"L x 4.00"H/Front

IMPRINT METHOD: Screen Print

PACKAGING: Poly Bag

WEIGHT: 24.5 lbs per 100 Units

100 250 500 1000 (4A)

Check website for pricing.



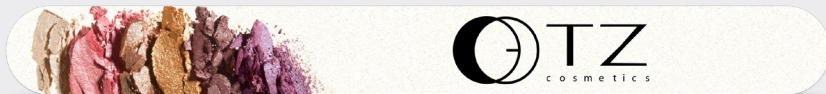
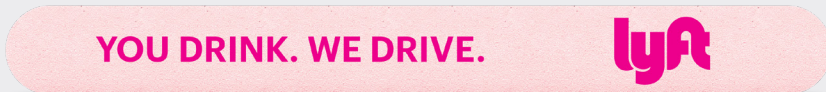
PERSONAL CARE



All emery boards available on natural, pink and yellow paper.



All emery boards feature 120 front grit and 240 reverse grit.



ITEM 5151 TOUCH UP EMERY BOARD

SIZE: 3.00"L x 0.50"W
IMPRINT SIZE: 3.00"L x 0.50"H/Front
IMPRINT METHOD: Digital Print
PACKAGING: Bulk
WEIGHT: 1.0 lbs per 100 Units

1500 3000 5000 7500 (4A)
Check website for pricing.

ITEM 5101 REGULAR EMERY BOARD

SIZE: 4.63"L x 0.50"W
IMPRINT SIZE: 4.63"L x 0.50"H/Front
IMPRINT METHOD: Digital Print
PACKAGING: Bulk
WEIGHT: 1.0 lbs per 100 Units

1500 3000 5000 7500 (4A)
Check website for pricing.

ITEM 5108 LARGE EMERY BOARD

SIZE: 7.00"L x 0.75"W
IMPRINT SIZE: 7.00"L x 0.75"H/Front
IMPRINT METHOD: Digital Print
PACKAGING: Bulk
WEIGHT: 1.0 lbs per 100 Units

1500 3000 5000 7500 (4A)
Check website for pricing.

ITEM 9002 FROSTED VINYL SLEEVE

SIZE: 7.50"L x 1.25"W

1500+ (A)
Check website for pricing.



ITEM 5204
RIBBON SHAPED
EMERY BOARD

SIZE: 3.00"L x 1.38"W
IMPRINT SIZE: 3.00"L x 1.38"H/Front
IMPRINT METHOD: Digital Print
PACKAGING: Bulk
WEIGHT: 1.0 lbs per 100 Units

1500 3000 5000 7500 (4A)
Check website for pricing.

ITEM 5205 RIBBON EMERY BOARD

SIZE: 4.50"L x 0.94"W
IMPRINT SIZE: 4.50"L x 0.94"H/Front
IMPRINT METHOD: Digital Print
PACKAGING: Bulk
WEIGHT: 1.0 lbs per 100 Units

1500 3000 5000 7500 (4A)
Check website for pricing.





ITEM 5244
BUSINESS CARD EMERY BOARD

SIZE: 3.50"L x 2.00"W
IMPRINT SIZE: 3.50"L x 2.00"H/Front
IMPRINT METHOD: Digital Print
PACKAGING: Poly Bag
WEIGHT: 1.0 lbs per 100 Units

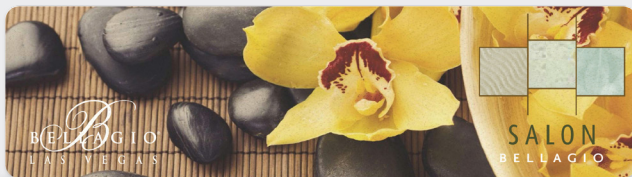
1500 3000 5000 7500 (4A)
Check website for pricing.



ITEM 5240
OVAL EMERY BOARD

SIZE: 4.00"L x 2.00"W
IMPRINT SIZE: 4.00"L x 2.00"H/Front
IMPRINT METHOD: Digital Print
PACKAGING: Bulk
WEIGHT: 1.0 lbs per 100 Units

1500 3000 5000 7500 (4A)
Check website for pricing.



ITEM 5109
MINI BUMPER STICKER EMERY BOARD

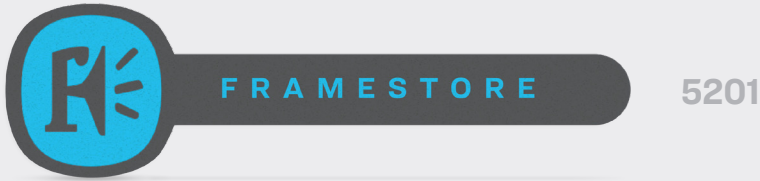
SIZE: 4.60"L x 1.25"W
IMPRINT SIZE: 4.60"L x 1.25"H/Front
IMPRINT METHOD: Digital Print
PACKAGING: Bulk
WEIGHT: 1.0 lbs per 100 Units

1500 3000 5000 7500 (4A)
Check website for pricing.

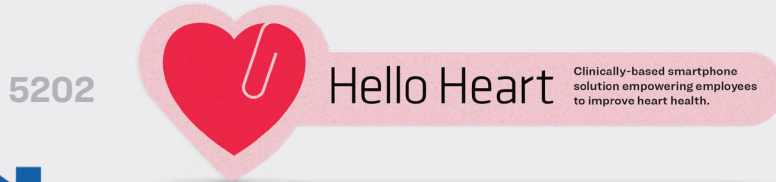


MAKE ANY EMERY BOARD
A WRITE-ON™

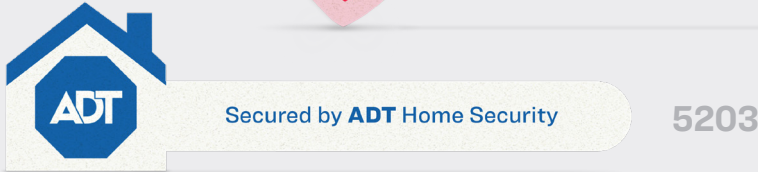
Smooth, photo quality paper on one side with 120 grit garnet on the reverse side. A unique combo your clients are sure to use for appointment cards, business cards and save the date reminders. Now you can jot a note directly on your emery board. **Call for pricing.**



ITEM 5201
ROUND EMERY BOARD
 SIZE: 4.44"L x 1.25"W
 IMPRINT SIZE: 4.44"L x 1.25"H/Front



ITEM 5202
HEART EMERY BOARD
 SIZE: 4.44"L x 1.25"W
 IMPRINT SIZE: 4.44"L x 1.25"H/Front



ITEM 5203
HOUSE EMERY BOARD
 SIZE: 4.50"L x 1.25"W
 IMPRINT SIZE: 4.50"L x 1.25"H/Front



ITEM 5206
AMBULANCE EMERY BOARD
 SIZE: 4.31"L x 0.88"W
 IMPRINT SIZE: 4.31"L x 0.88"H/Front



ITEM 5238
CAR EMERY BOARD
 SIZE: 4.60"L x 1.03"W
 IMPRINT SIZE: 4.60"L x 1.03"H/Front



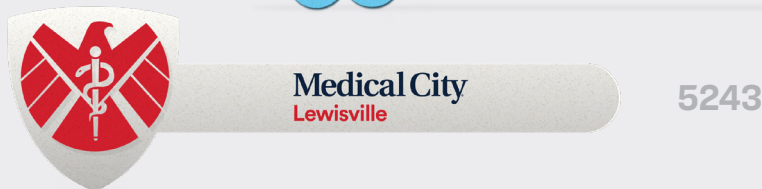
ITEM 5239
SQUARE EMERY BOARD
 SIZE: 4.57"L x 1.00"W
 IMPRINT SIZE: 4.57"L x 1.00"H/Front



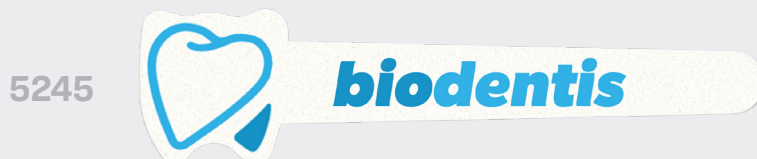
ITEM 5241
PLUS SIGN EMERY BOARD
 SIZE: 4.54"L x 1.11"W
 IMPRINT SIZE: 4.54"L x 1.11"H/Front



ITEM 5242
FLOWER EMERY BOARD
 SIZE: 4.58"L x 1.31"W
 IMPRINT SIZE: 4.58"L x 1.31"H/Front



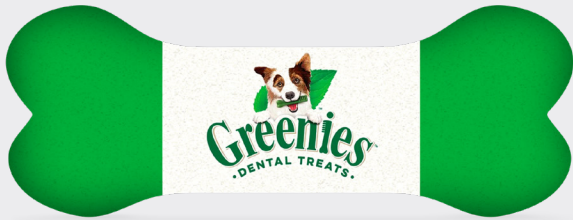
ITEM 5243
SHIELD EMERY BOARD
 SIZE: 4.55"L x 1.37"W
 IMPRINT SIZE: 4.55"L x 1.37"H/Front



ITEM 5245
TOOTH EMERY BOARD
 SIZE: 4.50"L x 0.94"W
 IMPRINT SIZE: 4.50"L x 0.94"H/Front

IMPRINT METHOD: Digital Print
PACKAGING: Bulk
WEIGHT: 1.0 lbs per 100 Units

1500 3000 5000 7500 (4A)
Check website for pricing.



5248

ITEM 5248
DOG BONE EMERY BOARD

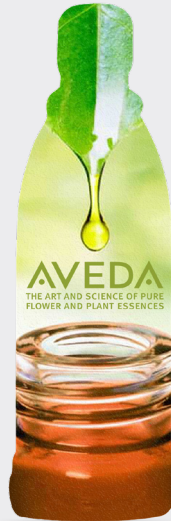
SIZE: 2.50"L x 1.12"W
IMPRINT SIZE: 2.50"L x 1.12"H/Front



5246

ITEM 5246
SODA CAN EMERY BOARD

SIZE: 3.50"L x 1.17"W
IMPRINT SIZE: 3.50"L x 1.17"H/Front



5247

ITEM 5247
WATER BOTTLE EMERY BOARD

SIZE: 3.50"L x 1.17"W
IMPRINT SIZE: 3.50"L x 1.17"H/Front



5237

ITEM 5237
ROUND EMERY BOARD

SIZE: 1.50" Dia.
IMPRINT SIZE: 1.50" Dia./Front



5207

ITEM 5207
GAVEL EMERY BOARD

SIZE: 4.63"L x 2.59"W
IMPRINT SIZE: 4.63"L x 2.59"H/Front



523601

ITEM 523601
ORNAMENT EMERY BOARD

SIZE: 2.375"L x 2.00"W
IMPRINT SIZE: 2.375"L x 2.00"H/Front



523603

ITEM 523603
CANDY CANE EMERY BOARD

SIZE: 4.70"L x 1.65"W
IMPRINT SIZE: 4.70"L x 1.65"H/Front

IMPRINT METHOD: Digital Print
PACKAGING: Bulk
WEIGHT: 1.0 lbs per 100 Units
1500 3000 5000 7500 (4A)
Check website for pricing.

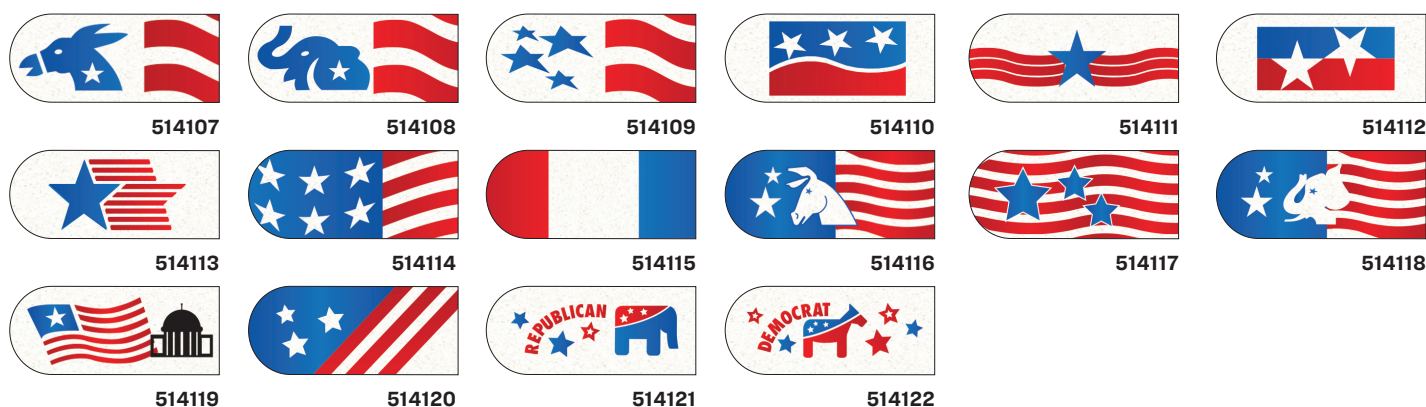


ITEM 5141 POLITICAL EMERY BOARD

SIZE: 4.63"L x 0.50"W
IMPRINT SIZE: 4.63"L x 0.50"H/Front
IMPRINT METHOD: Digital Print
PACKAGING: Poly Bag
WEIGHT: 1.0 lbs per 100 Units

ITEM 5141 STOCK DESIGNS

Political emery board designs also available on all emery boards. Full color pricing applies.



STOCK EMERY BOARD PATTERNS

Available on all emery boards. Full color pricing applies.





ITEM 5814 MINI SALON BOARD

- Professional quality foam insert for maximum comfort.
- High-quality grit on both sides.

SIZE: 3.25"L x 0.75"W

IMPRINT SIZE: 3.25"L x 0.75"H/Front

IMPRINT METHOD: Digital Print

PACKAGING: Bulk

WEIGHT: 1.0 lbs per 100 Units

200 500 1500 2500 (4A)

Check website for pricing.



ITEM 5262 SALON BOARD

- Professional quality foam insert for maximum comfort.
- High-quality grit on both sides.

SIZE: 6.50"L x 0.75"W

IMPRINT SIZE: 6.50"L x 0.75"H/Front

IMPRINT METHOD: Digital Print

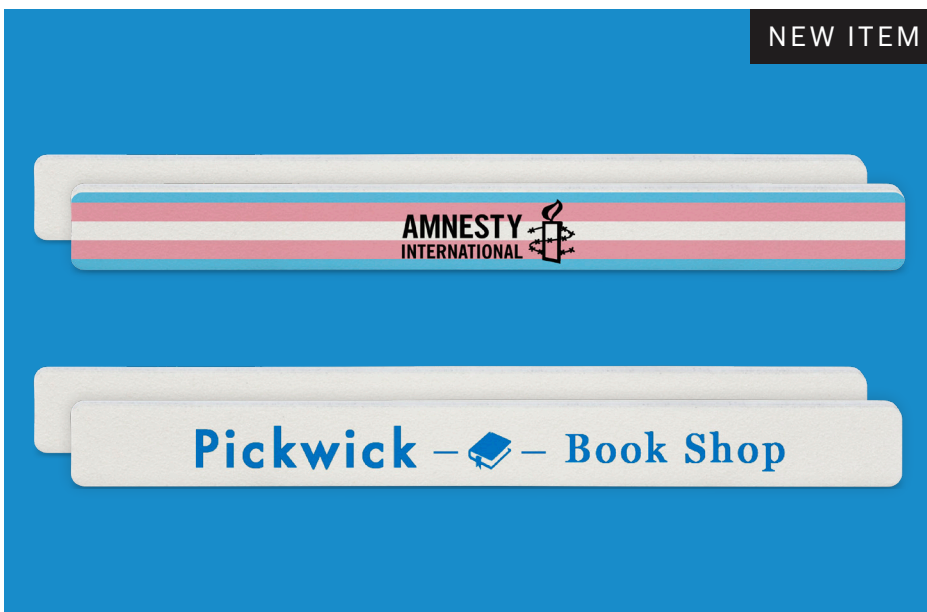
PACKAGING: Bulk

WEIGHT: 1.5 lbs per 100 Units

200 500 1500 2500 (4A)

Check website for pricing.

NEW ITEM



ITEM 5214 WASHABLE SALON BOARD

- Professional quality foam insert for maximum comfort.
- 100 grit on front side, 180 on reverse.
- Completely washable for durable, long term use.

SIZE: 7.00"L x 0.75"W

IMPRINT SIZE: 7.00"L x 0.75"H

IMPRINT METHOD: Digital Print

PACKAGING: Poly Bag

WEIGHT: 2.0 lbs per 100 Units

200 500 1500 2500 (4A)

Check website for pricing.

ITEM 5268 MINI SALON BOARD WITH CASE

- Professional quality foam insert for maximum comfort.
- High-quality grit on both sides.
- Packaged in a frosted plastic sliding case.
- Case imprint available – additional setup and run charge will apply.

SIZE: 3.25"L x 0.75"W

IMPRINT SIZE: 3.25"L x 0.75"H/Front

IMPRINT METHOD: Digital Print

PACKAGING: Bulk

WEIGHT: 4.0 lbs per 100 Units

200 500 1500 2500 (4A)

Check website for pricing.



ITEM 5272 SALON BOARD WITH CASE

- Professional quality foam insert for maximum comfort.
- High-quality grit on both sides.
- Packaged in a frosted plastic sliding case.
- Case imprint available – additional setup and run charge will apply.

SIZE: 6.88"L x 1.13"W

IMPRINT SIZE: 6.88"L x 1.13"H/Front

IMPRINT METHOD: Digital Print

PACKAGING: Bulk

WEIGHT: 6.0 lbs per 100 Units

200 500 1500 2500 (4A)

Check website for pricing.



ITEM 5263 3-IN-1 SALON BOARD

- Professional quality foam insert for maximum comfort.
- 240, 400 and 3000 grits to blend, smooth and shine nails in one convenient package.

SIZE: 7.00"L x 0.75"W

IMPRINT SIZE: 7.00"L x 0.75"H

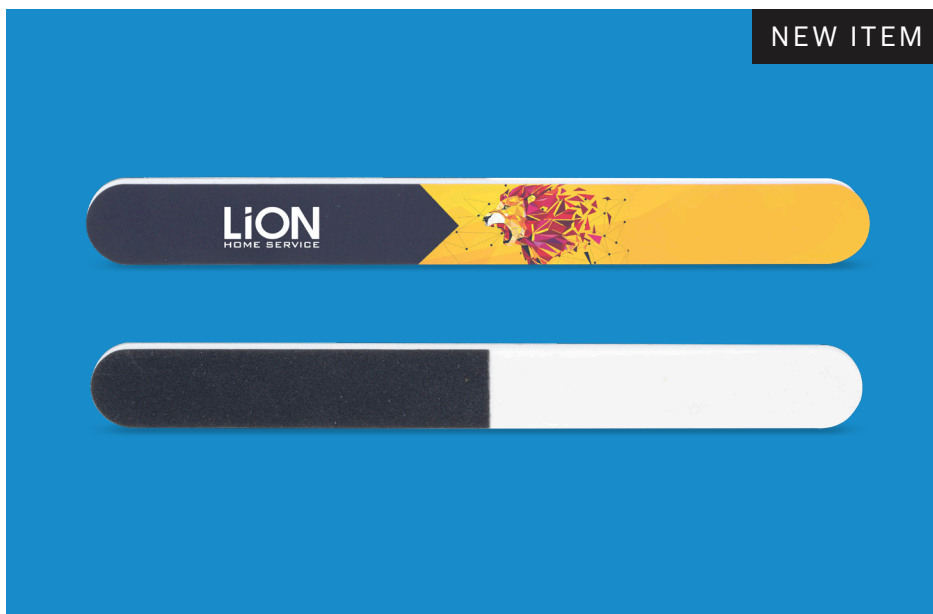
IMPRINT METHOD: Digital Print

PACKAGING: Bulk

WEIGHT: 1.5 lbs per 100 Units

200 500 1500 2500 (4A)

Check website for pricing.



NEW ITEM



ITEM 5023 BABY NAIL CLIPPERS

- Designed for delicate tasks.
- Traditional folding design with tapered head.
- Protective vinyl pouch, available in blue and pink.

SIZE: 2.13"L x 0.50"W

IMPRINT SIZE: 1.75"L x 0.50"H/Back Pouch

IMPRINT METHOD: Pad Print

PACKAGING: Bulk

WEIGHT: 3.5 lbs per 100 Units

200 500 1500 2500 (4A)

Check website for pricing.



ITEM 5001 NAIL CLIPPERS

- Traditional folding design, includes file with curved tip for hard-to-reach dirt underneath nails.
- Available in chrome finish.

SIZE: 2.13"L x 0.50"W

IMPRINT SIZE: 0.75"L x 0.16"H/Handle Top

IMPRINT METHOD: Laser Engrave

PACKAGING: Poly Bag

WEIGHT: 3.5 lbs per 100 Units

200 500 1500 2500 (4A)

Check website for pricing.



ITEM 5809 FOLDING MANICURE SET

- Includes six chrome stainless steel tools:
 - Clippers, tweezers, nail file, scissors, cuticle pusher, and cuticle trimmer.
- Packaged in leatherette case with snap closure.
- Available in black.

SIZE: 2.50"L x 4.50"W

IMPRINT SIZE: 2.00"L x 1.63"H/Case Front

IMPRINT METHOD: Pad Print

PACKAGING: Poly Bag

WEIGHT: 14.5 lbs per 100 Units

100 250 500 1000 (4A)

Check website for pricing.



ITEM 5837 EXECUTIVE MANICURE SET

- Includes six satin finish stainless steel tools:
 - Tweezers, nail file, toe nail clipper, finger nail clipper, cuticle scissors, and cuticle pusher.
- Packaged in zippered leatherette case.
- Available in black.

SIZE: 4.38"L x 2.88"W

IMPRINT SIZE: 3.00"L x 1.25"H/Case Front

IMPRINT METHOD: Pad Print

PACKAGING: Poly Bag

WEIGHT: 22.5 lbs per 100 Units

50 100 250 500 (4A)

Check website for pricing.

ITEM 5522 SPF 15 LIP BALM

- SPF 15 lip balm with moisturizing and soothing ingredients.

SIZE: 2.625"L x 0.625"W
IMPRINT SIZE: 2.125"L x 2.125"H/Label
IMPRINT METHOD: Full Color Label
PACKAGING: Bulk
WEIGHT: 2.7 lbs per 100 Units

250 500 1000 2500 (4A)
Check website for pricing.

NEW ITEM



FLAVORS: Unflavored, Tropical, Piña Colada, Vanilla, Berry, Cherry, Spearmint, Pineapple, Mango, Strawberry, Peppermint, Vanilla Mint
SPECIAL HOLIDAY FLAVORS: Ginger Bread, Sugar Cookie, Chocolate

ITEM 5419 HAND SANITIZER SPRAY

- Convenient .32 oz pocket sprayer.
- Destroys common bacteria and germs, doesn't leave any sticky residue.

SIZE: 5.50"L x 0.61"W
IMPRINT SIZE: 3.375"L x 1.95"H/Label
IMPRINT METHOD: Full Color Label
PACKAGING: Bulk
WEIGHT: 6.7 lbs per 100 Units

250 500 1000 2500 (4A)
Check website for pricing.

NEW ITEM



ITEM 5421 SPF 30 SUNSCREEN TOTTLE

- 1.9 oz unscented SPF 30 sunscreen.
- White bottle with silver carabiner clip.

SIZE: 4.57"L x 1.625"W
IMPRINT SIZE: 2.25"L x 1.13"W/Label
IMPRINT METHOD: Full Color Label
PACKAGING: Bulk
WEIGHT: 20.70 lbs per 100 Units

250 500 1000 2500 (4A)
Check website for pricing.

NEW ITEM



ITEM 5533 SKIN CARE KIT

- Includes 1 oz SPF 15 Sunscreen with UVA/UVB broad spectrum protection, SPF 15 lip balm, 32 oz hand sanitizer spray, 6"L x 4"W clear pouch, and full color, 2 sided insert card.

- Price includes 4 imprints.

SIZE: 4.00"L x 6.00"W
IMPRINT SIZE: 5.50"L x 3.50"H/2-Sided Card
 3.375"L x 1.95"H/Sanitizer Label
 2.125"L x 2.125"H/Lip Balm Label
 2.25"L x 1.13"H/Sunscreen Label
IMPRINT METHOD: Digital Print

PACKAGING: Bulk
WEIGHT: 19.0 lbs per 100 Units

250 500 1000 2500 (4A)
Check website for pricing.

NEW ITEM



ORDER INFORMATION

GENERAL ORDER INFORMATION

PRODUCTION TIME: 3-5 working days. Some items may require a longer production time. Call for more information.

OVER/UNDER RUNS: We reserve the right to ship and bill for five percent over or under ordered quantity.

BLANK ITEM ORDERS: Use next column pricing.

PAYMENT TERMS: Net 30 days upon credit approval.

PRODUCT GUARANTEE: Alexander warrants all products to be of the highest quality and will replace any defective products without charge. Liability limited to amount of invoice.

RETURNS: All claims must be submitted in writing within 30 days from receipt of goods. Returned merchandise will not be accepted without a return authorization number issued by Alexander. Goods must be returned within 15 working days of authorization issuance or the claim will be void.

REPEAT ORDERS: No set up charge for orders that are less than two years old. When reordering, specify previous purchase order number on current purchase order.

CANCELLATION: Customer is responsible for all costs incurred after production starts.

SHIPPING: Most orders will be shipping from ZIP code 61776. The most economical carrier will be selected unless otherwise specified.

FREIGHT CLAIMS: Recourse with carrier is the responsibility of the customer. Title to merchandise passes to consignee on carrier pickup.

PROP65 COMPLIANCE: Check website for updated compliance information.

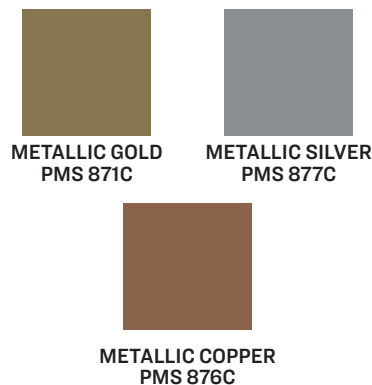
STANDARD IMPRINT COLORS

Alexander promotional products are available with 22 different imprint ink colors at no additional charge. If a color other than described below is needed, be certain to specify the PMS coated color number or name.

There is a \$45.00(G) charge for a requested color that is not on the list shown here.



STANDARD METALLIC COLORS



SAMPLE CHARGES

RANDOM SAMPLES: Free samples with provided shipper number.

BLANK SAMPLES: Free samples with provided shipper number.

SPEC SAMPLES: 25% off EQP with \$50(G) setup charge, per color/location decorated with customer supplied artwork.

SELF-PROMOTIONS: 25% off EQP with \$25(G) setup charge, per color/location with provided shipper number. Decorated with customer supplied artwork

SERVICE CHARGES

SETUP: \$50(G) per imprint color/location, applied to all orders except exact repeats within two years.

COPY CHANGE: \$50(G) will be applied per copy change. Each copy change must meet catalog minimums or a less than minimum charge will apply.

LESS THAN MINIMUM: \$50(G) applied to orders that are less than first column quantity. Absolute minimum is half of first column.

RUN CHARGE: \$.30(G) per additional color and/or location.

SCREEN WASH: \$20(G) per color change.

PMS MATCH: \$45(G) for a PMS coated color match not included in our standard imprint color list.

VIRTUAL PROOF: No charge.

EMAIL/PAPER PROOF: \$12(G) production begins after receipt of proof approval.

RUSH CHARGE: \$75(G) Contact Alexander for availability. Orders must be received by 12:00 PM CST.

PRICING: All pricing in US Dollars.

PRE-PRODUCTION SAMPLES: \$50(G) Production begins after receipt of proof approval.

EXACT QUANTITIES: Available at a charge of \$20(G). Must be stated on purchase order.

ART RECONSTRUCTION: \$50(G) minimum for first 30 minutes. An additional \$50(G) per 30 minute increments.

POLY BAG: \$.075(G) per item on items where a poly bag is not standard.

LABELS: \$.07(G) per item to attach customer supplied labels.

MULTIPLE ITEM POLY BAG: \$.05(G) per item.

INSERTION: \$.32(G) per item to combine a non-Alexander item(s) with an Alexander item(s).

DROP SHIP: \$7.50(G) applied to each "ship to" after the first "ship to" address.

THIRD PARTY HANDLING: \$5(G) per carton for handling costs of packaging and preparing.

INTERNATIONAL SHIPMENTS: All duty and tax charges are the responsibility of the customer. All declaration documentation will include the retail value of goods, unless otherwise instructed by customer.

PERSONALIZATION: \$1.00(A) on laser engraved items.

RELEASE CHARGE: No release charge.

EMAIL CONTACTS

ORDERS: orders@alexandermc.com

RANDOM SAMPLE ORDERS: samples@alexandermc.com

ARTWORK: art@alexandermc.com

VIRTUALS: virtuals@alexandermc.com

GENERAL SERVICE INQUIRIES: service@alexandermc.com

IMPRINT METHODS



FULL COLOR PRINT

Full color printing is the process by which an inkjet printer prints directly onto the surface of a product. These imprints are bright, detailed and offer maximum brand exposure.



FULL COLOR DECAL

Full color decals are glossy, vibrant, high quality decal paper allowing for detailed artwork. High-grade adhesive backing secures the decal to the product, creating an eye-catching imprint.



PAD PRINT

Pad printing transfers an imprint onto a product via the stamping of an inked silicone pad that has a mirrored image of the imprint cut out of it.



SCREEN PRINT

Screen printed imprints are created through the process of burning the imprint into a silk mesh screen, creating a stencil for ink to pass through onto the product.



LASER ENGRAVE

Laser engraving is the process by which lasers burn an imprint into the surface of a product, leaving a marking distinct in color and texture from that of the metal.



EPOXY DOME

An epoxy dome is created by placing an imprint in the head of a writing instrument and sealing it with a clear drop of epoxy, creating a smooth, vibrant shine.

NEW PRODUCTS



ITEM 2964
FLIP LANTERN
PG. 25



ITEM 2969 SWIVEL FLASHLIGHT PG. 21



ITEM 2261 PLIER MULTI TOOL PG. 15



ITEM 2973
SQUARE WORKLIGHT
PG. 26



ITEM 2929 SILICONE BAND LIGHT PG. 22



ITEM 5419 HAND SANITIZER SPRAY PG. 53



ITEM 2277 MINI PLIER MULTI TOOL PG. 15

ITEM 5522
SPF15
LIP BALM
PG. 53



ITEM 5421
SPF30
SUN-
SCREEN
TOTTLE
PG. 53



ITEM 5533
SKIN
CARE
KIT
PG. 53



ITEM 1274 3-IN-1 DESK TOOL PG. 41



ITEM 5214 WASHABLE SALON BOARD PG. 50



ITEM 5263 3-IN-1 SALON BOARD PG. 51

ITEM 1365
RULER/DOUBLE MAGNIFIER
PG. 41



INDEX BY ITEM NUMBER

ITEM #	PG.	ITEM DESCRIPTION	ITEM #	PG.	ITEM DESCRIPTION	ITEM #	PG.	ITEM DESCRIPTION
1024	41	STAPLE REMOVER	2099	17	16-FT CARABINER TAPE MEASURE	2971	26	CYCLOPS COB WORKLIGHT
1104	40	SLIM ISTYLUS PEN	2122	31	BOX CUTTER/SCRAPER	2973	26	SQUARE WORKLIGHT
1133	38	LOGO TOP PREMIER PENCIL	2199	17	10-FT TAPE MEASURE	5001	52	REGULAR NAIL CLIPPERS
1134	38	LOGO TOP PREMIER PEN	2200	12	POCKET PARTNER™ KEY TAG	5023	52	BABY NAIL CLIPPERS
1138	38	LOGO TOP PREMIER PEN & PENCIL SET	2261	15	PLIER MULTI-TOOL	5101	44	REGULAR EMERY BOARD
1144	39	COBRA™ PEN	2264	35	MULTI-TOOL CARABINER	5108	44	LARGE EMERY BOARD
1147	38	SLIM LOGO TOP PEN	2269	14	16 OZ HAMMER	5109	46	MINI BUMPER STICKER EMERY BOARD
1201	42	MAGNIFIER/CREDIT CARD HOLDER	2271	32	6" WIRE CUTTERS	5151	44	TOUCH UP EMERY BOARD
1207	42	LIGHTED DUO MAGNIFIER	2277	15	MINI PLIER MULTI-TOOL	5201	47	ROUND EMERY BOARD
1228	42	PAGE MARKER MAGNIFIER	2292	18	INSPECTION MIRROR/PICKUP TOOL	5202	47	HEART EMERY BOARD
1270	40	6-IN-1 OMEGA PEN	2425	28	REGULAR TIRE GAUGE	5203	47	HOUSE EMERY BOARD
1273	40	8-IN-1 LIGHTED LOGO PEN	2460	28	HIGH PRESSURE TIRE GAUGE	5204	45	RIBBON SHAPED EMERY BOARD
1274	41	3-IN-1 DESK TOOL	2463	28	BUDGET TIRE GAUGE	5205	45	RIBBON EMERY BOARD
1342	43	ECO PASSWORD PAD	2473	29	TIRE DEPTH GAUGE	5206	47	AMBULANCE EMERY BOARD
1364	43	PRESIDENTIAL JOURNAL	2509	17	25-FT CARABINER TAPE MEASURE	5214	50	WASHABLE SALON BOARD
1364BK-BX	43	TWO PIECE GIFT BOX	2515	27	MAGNETIC PARTS BOWL	5238	47	CAR EMERY BOARD
1365	41	RULER/DOUBLE MAGNIFIER	2516	27	MINI MAGNETIC ACCESSORY BOWL	5239	47	SQUARE EMERY BOARD
1919	42	METAL CARD WALLET	2523	34	CREDIT CARD BOTTLE OPENER	5240	46	OVAL EMERY BOARD
1922	36	ABSORBING STONE CAR COASTER	2524	29	AUTO ESCAPE TOOL	5241	47	PLUS SIGN EMERY BOARD
1923	36	ABSORBING STONE COASTER	2532	37	MAGNETIC COASTER WITH BOTTLE OPENER	5242	47	FLOWER EMERY BOARD
1923SET	36	ABSORBING STONE COASTER SET	2532SET	37	MAGNETIC COASTER WITH BOTTLE OPENER SET	5243	47	SHIELD EMERY BOARD
2001	31	FLIP-IT SAFETY CUTTER	2534	34	7" BOTTLE OPENER	5244	46	BUSINESS CARD EMERY BOARD
2004	30	SAFETY CUTTER KEY TAG	2536	35	DOUBLE DUTY BOTTLE OPENER	5245	47	TOOTH EMERY BOARD
2009	30	2-IN-1 MARKER/CUTTER	2537	35	BOTTLE CAP SHAPED BOTTLE OPENER	5262	50	SALON BOARD
2020	32	SMALL SNAP BLADE CUTTER	2591	16	SOFT VINYL TAPE MEASURE	5263	51	3-IN-1 SALON BOARD
2021	32	LARGE SNAP BLADE CUTTER	2901	14	9" MAGNETIC LEVEL	5268	51	MINI SALON BOARD WITH CASE
2024	33	UTILITY SCISSORS WITH MAGNETIC HOLDER	2902	23	KEY LIGHT	5272	51	SALON BOARD WITH CASE
2032	3	POCKET PARTNER™ REVERSIBLE	2905	13	4-IN-1 PRECISION SCREWDRIVER	5419	53	HAND SANITIZER SPRAY
2035	2	POCKET PARTNER™ FIXED	2919	22	SOLAR CARABINER CLIP LIGHT	5421	53	SPF 30 SUNSCREEN TOTTLE
2040	12	MICRO TOOLS	2927	23	MAGNETIC POCKET LIGHT	5522	53	SPF 15 LIP BALM
2044	13	6-IN-1 SCREWDRIVER	2929	22	SILICONE BAND LIGHT	5533	53	SKIN CARE KIT
2048	4	LEVEL RITE™ FIXED	2930	19	LIGHTED MAGNETIC GRIPPER PICKUP TOOL	5809	52	FOLDING MANICURE SET
2049	5	LEVEL RITE™ REVERSIBLE	2933	23	FLEX LIGHT WITH LASER	5814	50	MINI SALON BOARD
2052	7	BIG JAKE™ REVERSIBLE	2938	19	TELESCOPING FLEX FLASHLIGHT	5837	52	EXECUTIVE MANICURE SET
2054	13	SUPER TRI-AD™ 4-IN-1 SCREWDRIVER	2946	20	MAGNETIC METAL FLASHLIGHT	9000	39	TWO PIECE GIFT BOX
2055	6	BIG JAKE™ FIXED	2948	24	POP UP LANTERN	9002	44	FROSTED VINYL SLEEVE
2062	9	TRI-AD™ REVERSIBLE	2957	20	COB VANGUARD FLASHLIGHT	9027	39	DOUBLE MAGNETIC GIFT BOX
2065	8	TRI-AD™ FIXED	2959	24	FROSTED CARABINER DOME LIGHT	9045	39	TWO PIECE SLIDER GIFT BOX
2066	10	SUPER TRI-AD™ FIXED	2960	24	COB LIGHT PUCK	9051	39	FLOCKED PEN SLEEVE
2067	11	SUPER TRI-AD™ REVERSIBLE	2964	25	FLIP LANTERN			
2072	12	REVERSIBLE POCKET PARTNER™ KEY TAG	2967	25	PORTABLE COB LANTERN/FLASHLIGHT			
2082	18	MAGNETIC PICKUP TOOL	2969	21	SWIVEL FLASHLIGHT			
2098	16	6-FT CARABINER TAPE MEASURE						